



2003
Tulare County Annual
Crop and Livestock Report



Tulare County Agricultural Commissioner/Sealer

Gary Kunkel, Agricultural Commissioner
Sealer of Weights and Measures
William R. Appleby, Assistant
Commissioner/Sealer

A. G. KAWAMURA, SECRETARY
CALIFORNIA DEPARTMENT OF FOOD AND AGRICULTURE

April 2004

AND

THE HONORABLE BOARD OF SUPERVISORS
COUNTY OF TULARE

William Sanders, Chairman Connie Conway
Jim Maples Lali Moheno
J. Steven Worthley

Brian Haddix - County Administrative Officer

It is my pleasure to submit the 2003 Tulare County Annual Crop and Livestock Report. The report is produced in accordance with Sections 2272 and 2279 of the California Food and Agricultural Code and summarizes the acreage, production, and value of Tulare County's agricultural commodities. The figures contained herein represent gross returns to the producer and do not reflect actual net profit.

This year's total value of all commodities is \$3,296,522,000. This represents an increase of \$95,437,100 (or 2.98 percent) above last year's value.

The price of market milk increased by \$.80 per hundredweight (cwt) and volume increased by 2,931,000 cwt. The total value of milk increased by \$105,991,000 over that of 2002. Beef cattle and calf numbers improved this year with beef prices increasing also. However, an abundance of dairy cattle caused a drop in dairy cattle prices, which in turn was reflected as a loss in the total value of cattle and calves.

Total value of field crops decreased by 3.2% or \$9,726,000. Vegetable crops dropped by 22% in total value, primarily because of reduced acreage and a drop in the value of snap beans. Fruit and nut crops experienced a slight decrease. Almonds, cherries, grapefruit, kiwifruit, persimmons, plums, tangerines, and walnuts experienced increases in overall value. Nurseries experienced reduced prices per unit and sold more stock, but the lower prices decreased the total value by \$3,688,000. The largest drop was in Ornamental Trees and Shrubs with a decrease of \$6,584,000 or 13%. Apiary products had a 20% increase because of higher domestic demand and low supply. All livestock and poultry enjoyed more than a \$10.6 million dollar increase. Miscellaneous seed crops decreased in total value although cotton seed increased by 11%. Meanwhile, industrial crops grew by 39%, mainly because of increased timber harvesting.

Tulare County's grand total for all commodities is the second highest in its history. Our agricultural diversity remains our strength. Although individual commodities may struggle from year to year, Tulare County continues to grow quality crops that provide food and fiber for the world.

I wish to express my sincere appreciation to the many producers, processors, and agencies, both private and public, who supported our efforts in producing this report. I would also like to thank all the members of my staff, particularly Richard Homer and Dennis Haines. Without their hard work and valuable input, the publication of this report would have been impossible.

Respectfully submitted,

Gary W. Kunkel
Agricultural Commissioner/Sealer

Agricultural Commissioner/Sealer of Weights & Measures

Gary W. Kunkel

Assistant Agricultural Commissioner/Sealer

William R. Appleby

Deputy Agricultural Commissioner/Sealer

Brian Cox, Billy J. Deavours, Marilyn Kinoshita

Systems and Procedures Analyst

David Greenwood (Consultant)

Supervising Agricultural & Standards Inspectors

Donald Borges, David Case, Jerry McElhaney

Agricultural Staff Biologist

R. Dennis Haines

District Agricultural & Standards Inspectors

Dan Bigham
Steven W. Brown
Scott Cornett
Greg H. Dunbar

Chris Francone
Rafael Garcia, Jr.
David S. Gould
Kelly LeGrand

Robert C. Mann
Robert D. Milner
John M. Moreno
Gabriella Nunez

Jim L. Qualls
Stoney Savage
Deo P. Tigulo

Agricultural & Standards Inspectors

Karrie Batchelor
Dexter Bennett
David G. Bryant
Marvin Clark
Albert Coronel

Kristyna Cotta
Michelle DeCesare
Roy A. Fontaine
Richard T. Homer
Gavin Iacono

Robert Ibbs
Kurt Kilburn
Brandi Martin
Craig A. Mills
Martin Munoz

Sundip Rai
Paul Sihota
Curt D. Steggall
David Sumi
Ben Yosaka
Rick Yraceburu

Extra Help Inspectors & Pest Detection Trappers

Rene Benavidez
Ronald Carter
Wade DeCesare
Esteban DeLaCruz

Diana Flowers
Kerry Ladrigan
Joseph Lerda
Klay Mittel

Leonard Ogans
Nicole Pearson
Eusebio Perez
Melissa Plum

Sharon Plum
Martin Teixeira
Richard Vargas
Andrew Wachner
Edwin Yamamoto

2003 Retirees

John Akana

Bob Chilton

Thomas Zikratch

Staff Services Analyst I

Brenda Plum

Senior Account Clerk

Patricia McCurry

Office Assistant IV

Gloria Schoenborn

Office Assistant III

Sherry Hollingsworth

Anita Letsinger

Jesusita Martinez

Margie Renfro

Tulare County Agricultural Offices

TULARE	4437 South Laspina Street	(559) 685 - 3323
AG WAREHOUSE	1473 Ave 256, Visalia	(559) 733 - 6476
DINUBA (1)	324 West Tulare, Suite 102	(559) 591 - 5842
DINUBA (2)	324 West Tulare, Suite 102	(559) 591 - 5855
EXETER	101 West Pine Street	(559) 592 - 4075
LINDSAY	240 East Honolulu	(559) 562 - 6025
PIXLEY	188 South Main Street	(559) 757 - 3853
PORTERVILLE	25 South Hockett	(559) 782 - 4787
WOODLAKE	250 Antelope, Suite L	(559) 564 - 8320



TABLE OF CONTENTS

COUNTY ACREAGE-PERMANENT PLANTINGS	1
FIELD CROPS	2-3
VEGETABLE CROPS	3
FRUIT AND NUT CROPS	4-6
NURSERY PRODUCTS	7
APIARY PRODUCTS	7
LIVESTOCK AND POULTRY	8
LIVESTOCK AND POULTRY PRODUCTS	8
SEED CROPS	9
INDUSTRIAL CROPS	9
SUMMARY	10
MILLION DOLLAR PRODUCTS	11
TWENTY YEAR VALUE COMPARISON	12
STANDARD CARTON WEIGHTS	13
PRODUCE EXPORT DATA	13-14
ANNUAL SUSTAINABLE AGRICULTURE	15-17

TULARE COUNTY

ACREAGE-PERMANENT PLANTINGS

	BEARING ACREAGE	NON-BEARING ACREAGE	TOTAL ACREAGE
<u>CITRUS</u>			
Grapefruit & Pummelos	2,033	82	2,115
Lemons	3,781	152	3,933
Limes	5	0	5
Navels	72,725	3,145	75,870
Valencias	27,348	147	27,495
Tangerines & Tangelos	3,471	443	3,914
Total Citrus	109,363	3,969	113,332
<u>DECIDUOUS & GRAPES</u>			
Almonds	15,954	1,036	16,990
Apples	665	0	665
Apricots	676	47	723
Avocados	485	0	485
Cherries	1,744	412	2,156
Figs	32	0	32
Grapes			
Raisin	30,580	262	30,842
Table	28,830	860	29,690
Wine	13,654	0	13,654
Kiwifruit	1,730	28	1,758
Nectarines	15,740	676	16,416
Olives	15,800	76	15,876
Peaches			
Cling	1,215	112	1,327
Freestone	14,094	1,327	15,421
Pears & Asian Pears	463	12	475
Pecans	821	33	854
Persimmons	769	29	798
Pistachio Nuts	11,875	1,057	12,932
Plums	18,235	861	19,096
Pomegranates	1,361	71	1,432
Prunes - Dried Plums	6,352	563	6,915
Quince	201	19	220
Walnuts	33,551	1,555	35,106
Miscellaneous*	381	303	684
TOTAL			
Total Grapes	73,064	1,122	74,186
Total Orchard Crops	251,507	12,186	263,693
GRAND TOTAL	324,571	13,308	337,879

* Includes: Chestnuts, Dates, Grape Rootstock, Guava/Feijoa, and Plumcots/Plucots/Pluots

Field Crops

Total value of field crops decreased by 3.2% or \$9,726,000 in 2003. Field crops had more harvested acres, but total value declined. Corn - grain/silage lost \$5.9 million and Silage - small grain lost \$4.6 million.

Crop	Year	Harvested Acreage	Production		Value		
			Per Acre	Total	Unit	Per Unit	Total
Alfalfa - Hay	2003	102,449	7.83	802,000	Ton	99.20	79,558,000
	2002	107,912	8.13	877,000	Ton	100.00	87,700,000
Silage ^a	2003	X	2.58	136,000	Ton	32.80	4,461,000
	2002	X	2.75	144,000	Ton	22.00	3,168,000
Barley	2003	1,597	2.50	3,990	Ton	105.00	419,000
	2002	709	2.70	1,910	Ton	103.00	197,000
Beans - Dry	2003	4,921	1.57	7,730	Ton	540.00	4,174,000
	2002	4,768	1.48	7,060	Ton	599.00	4,229,000
Corn - Grain	2003	2,900	5.55	16,100	Ton	76.30	1,228,000
	2002	3,420	5.50	18,800	Ton	83.00	1,560,000
Silage	2003	132,155	22.80	3,013,000	Ton	21.50	64,780,000
	2002	130,546	24.50	3,198,000	Ton	22.00	70,356,000
Cotton - Lint ^b	2003	56,990	1,211.00	139,000	Bale	75.40	52,037,000
	2002	50,655	1,470.00	150,000	Bale	68.30	51,370,000
Seed	2003	X	X	47,400	Ton	190.00	9,006,000
	2002	X	X	51,600	Ton	220.00	11,352,000
Pasture & Range (Irrigated)	2003	109,950	X	X	Acre	130.00	14,294,000
	2002	109,950	X	X	Acre	125.00	13,744,000
Native	2003	615,000	X	X	Acre	13.00	7,995,000
	2002	615,000	X	X	Acre	12.50	7,688,000
Other	2003	85,122	X	X	Acre	22.00	1,873,000
	2002	80,000	X	X	Acre	20.00	1,600,000
Silage - Small Grain ^c	2003	83,368	14.50	1,209,000	Ton	18.50	22,366,000
	2002	79,010	17.50	1,383,000	Ton	19.50	26,968,000
Sorghum Grain	2003	2,710	2.65	7,180	Ton	92.50	664,000
	2002	3,000	2.20	6,600	Ton	75.00	495,000
Sudan Grass ^d	2003	8,115	30.00	243,000	Ton	16.00	3,888,000
	2002	5,343	20.00	107,000	Ton	16.00	1,712,000
Sugar Beets	2003	1,233	40.80	50,300	Ton	32.30	1,625,000
	2002	1,334	48.40	64,600	Ton	32.00	2,067,000
Wheat	2003	60,374	2.49	150,000	Ton	105.00	15,750,000
	2002	51,958	2.14	111,000	Ton	98.30	10,911,000

Field Crops continued

Crop	Year	Harvested Acreage	Per Acre	Production			Value	
				Total	Unit	Per Unit	Total	
Miscellaneous ^e	2003	6,500	X	X	X	X	5,997,000	
	2002	7,753	X	X	X	X	4,724,000	
TOTAL	2003	1,273,384					\$290,115,000	
	2002	1,251,358					\$299,841,000	

^a Green weight basis.

^b Yield per acre in pounds lint, production total in 495 lbs net weight bales, unit value in dollars per lint cwt.

^c Includes: Barley, Oats, Sorghum, Wheat, and Winter Forage

^d Sudan Grass reported as green chop in 2003.

^e Includes: Bean Screenings & Straw, Oat Grain, Oat Hay, Safflower, Sunflowers, and Straw.

Vegetable Crops

Decreased harvested acreage resulted in a loss of \$6,393,000 or 22% for all vegetable crops. This has been the trend with a 45% decrease in 2002. Cucumbers did enjoy a substantial increase in acreage and total value, but snap beans had lower acreage, yield and price than last year.

Crop	Year	Harvested Acreage	Per Acre	Production			Value	
				Total	Unit	Per Unit	Total	
Broccoli	2003	1,169	5.78	6,760	Ton	484.00	3,272,000	
	2002	1,628	5.69	9,260	Ton	430.00	3,982,000	
Cauliflower	2003	57	7.19	410	Ton	625.00	256,000	
	2002	415	6.32	2,620	Ton	615.00	1,611,000	
Cucumbers	2003	583	13.30	7,750	Ton	630.00	4,882,000	
	2002	199	13.70	2,730	Ton	563.00	1,537,000	
Snap Beans - Fresh	2003	553	2.17	1,200	Ton	1,010.00	1,212,000	
	2002	667	4.63	3,090	Ton	2,000.00	6,180,000	
Sweet Corn	2003	255	10.00	2,550	Ton	215.00	548,000	
	2002	176	8.13	1,430	Ton	250.00	358,000	
Tomatoes - Fresh	2003	91	17.70	1,610	Ton	630.00	1,014,000	
	2002	89	9.44	840	Ton	520.00	437,000	
Miscellaneous*	2003	3,145	X	X	X	X	11,028,000	
	2002	3,211	X	X	X	X	14,500,000	
TOTAL	2003	5,853					\$22,212,000	
	2002	6,385					\$28,605,000	

* Includes: Artichokes, Assorted Peppers, Bitter Melons and Leaves, Bok Choy, Cabbage, Cilantro, Collards, Daikon, Eggplant, Garlic, Gourds, Kale, Lettuce, Cantaloupe Melons, Honeydew Melons, Okra, Onions, Peas, Potatoes, Processed Broccoli, Pumpkins, Radishes, Siqua, Spinach, Squash, Taro, Tomatillos, Processed Tomatoes, Turnips, Watermelon, and Zucchini.

Fruit and Nut Crops

Total value fell by \$6,605,900. Crops that did well with increases in total value were: Almonds, Cherries, Grapefruit, Kiwifruit, Persimmons, Plums, Tangerines and Walnuts.

Crop	Year	Harvested Acreage	Per Acre	Production		Value	
				Total	Unit	Per Unit	Total
Almonds - Meats	2003	15,954	0.92	14,700	Ton	3,000.00	44,100,000
	2002	15,595	1.03	16,100	Ton	2,020.00	32,522,000
Hulls	2003	X	X	40,400	Ton	85.00	3,434,000
	2002	X	X	39,600	Ton	85.00	3,366,000
Apples	2003	665	6.72	4,470	Ton	723.00	3,232,000
	2002	613	8.51	5,220	Ton	687.00	3,586,000
Apricots	2003	676	4.04	2,730	Ton	963.00	2,629,000
	2002	600	6.96	4,180	Ton	689.00	2,880,000
Avocados	2003	485	2.73	1,320	Ton	1,460.00	1,927,000
	2002	367	3.08	1,130	Ton	1,780.00	2,011,000
Cherries	2003	1,744	2.14	3,730	Ton	5,180.00	19,321,000
	2002	1,562	3.04	4,750	Ton	3,160.00	15,010,000
Grapes - Total	2003	73,064	X	X	X	X	378,511,000
	2002	73,110	X	X	X	X	399,772,000
Raisin Varieties	2003	30,580	9.34	X	X	X	X
	2002	30,659	9.78	X	X	X	X
Canned	2003	X	X	22,500	Ton	244.00	5,490,000
	2002	X	X	23,000	Ton	243.00	5,589,000
Crushed ^a	2003	X	X	49,900	Ton	96.10	4,795,000
	2002	X	X	79,000	Ton	77.90	6,154,000
Dried ^b	2003	X	X	32,300	Ton	571.00	18,443,000
	2002	X	X	17,300	Ton	432.00	7,474,000
Fresh	2003	X	X	68,800	Ton	964.00	66,323,000
	2002	X	X	120,000	Ton	944.00	113,280,000
Table Varieties	2003	28,830	8.43	X	X	X	X
	2002	28,618	8.87	X	X	X	X
Crushed	2003	X	X	20,900	Ton	70.90	1,482,000
	2002	X	X	20,700	Ton	95.90	1,985,000
Fresh	2003	X	X	222,000	Ton	1,160.00	257,520,000
	2002	X	X	233,000	Ton	1,020.00	237,660,000
Wine Varieties	2003	13,654	9.28	X	X	X	X
	2002	13,833	9.80	X	X	X	X
Crushed	2003	X	X	122,000	Ton	179.00	21,838,000
	2002	X	X	117,000	Ton	167.00	19,539,000
Juice	2003	X	X	4,730	Ton	554.00	2,620,000
	2002	X	X	18,600	Ton	435.00	8,091,000

Fruit and Nut Crops continued

Crop	Year	Harvested Acreage	Production			Value	
			Per Acre	Total	Unit	Per Unit	Total
Grapefruit - Fresh ^c	2003	2,033	12.60	25,600	Ton	576.00	14,746,000
	2002	1,603	11.00	17,600	Ton	470.00	8,272,000
Kiwifruit	2003	1,730	8.48	14,700	Ton	1,280.00	18,816,000
	2002	1,363	4.32	5,890	Ton	1,800.00	10,602,000
Lemons - Fresh	2003	3,781	13.40	33,900	Ton	674.00	22,849,000
	2002	3,241	13.70	37,700	Ton	685.00	25,824,000
Processed	2003	X	X	16,700	Ton	15.30	256,000
	2002	X	X	6,660	Ton	12.00	79,900
Nectarines - Fresh	2003	15,740	6.11	96,200	Ton	691.00	66,474,000
	2002	14,542	7.64	111,000	Ton	708.00	78,588,000
Olives	2003	15,800	3.64	57,500	Ton	462.00	26,565,000
	2002	15,680	3.07	48,100	Ton	601.00	28,908,000
Oranges - Navel	2003	72,725	12.40	694,000	Ton	465.00	322,710,000
	2002	69,725	11.30	646,000	Ton	537.00	346,902,000
Processed	2003	X	X	207,000	Ton	30.40	6,293,000
	2002	X	X	142,000	Ton	6.40	909,000
Oranges - Valencia	2003	27,348	13.50	248,000	Ton	428.00	106,144,000
	2002	27,531	11.20	219,000	Ton	465.00	101,835,000
Processed	2003	X	X	122,000	Ton	60.30	7,357,000
	2002	X	X	89,300	Ton	18.10	1,616,000
Peaches - Cling	2003	1,215	17.00	20,700	Ton	231.00	4,782,000
	2002	787	14.60	11,500	Ton	224.00	2,576,000
Freestone - Fresh	2003	14,094	8.28	81,700	Ton	709.00	57,925,000
	2002	13,088	9.70	89,000	Ton	937.00	83,393,000
Processed	2003	X	X	35,000	Ton	211.00	7,385,000
	2002	X	X	38,000	Ton	199.00	7,562,000
Pears & Asian Pears	2003	463	5.42	2,510	Ton	1,300.00	3,263,000
	2002	422	5.82	2,460	Ton	1,480.00	3,641,000
Pecans	2003	821	0.78	640	Ton	2,700.00	1,728,000
	2002	821	1.13	928	Ton	2,600.00	2,413,000
Persimmons	2003	769	7.30	5,610	Ton	1,380.00	7,742,000
	2002	821	1.13	928	Ton	2,600.00	2,413,000
Pistachio Nuts	2003	11,875	0.73	8,670	Ton	2,530.00	21,935,000
	2002	10,345	1.62	16,800	Ton	2,390.00	40,152,000
Plums - Fresh	2003	18,235	6.85	125,000	Ton	684.00	85,500,000
	2002	17,091	5.68	97,100	Ton	783.00	76,029,000
Pomegranates	2003	1,361	4.42	6,020	Ton	974.00	5,863,000
	2002	1,172	4.53	5,310	Ton	997.00	5,294,000

Fruit and Nut Crops continued

Crop	Year	Harvested Acreage	Production		Unit	Value	
			Per Acre	Total		Per Unit	Total
Prunes - Dried Plums ^d	2003	6,352	1.78	11,300	Ton	543.00	6,136,000
	2002	5,787	1.91	10,000	Ton	745.00	7,450,000
Quince	2003	201	5.77	1,160	Ton	1,280.00	1,485,000
	2002	174	6.35	1,100	Ton	1,400.00	1,540,000
Tangerines ^e	2003	3,471	10.40	36,100	Ton	908.00	32,779,000
	2002	2,616	7.72	20,200	Ton	1,280.00	25,856,000
Walnuts	2003	33,551	1.87	62,700	Ton	1,100.00	68,970,000
	2002	31,466	1.01	31,780	Ton	1,000.00	31,780,000
Miscellaneous ^f	2003	1,159	X	X	X	X	4,930,000
	2002	509	X	X	X	X	5,658,000
TOTAL	2003	325,312					\$1,355,787,000
	2002	310,454					\$1,362,392,900

^a Includes green weight raisins for distillery materials and juice pack.

^b A combined value reflecting free and reserve tonnage.

^c Includes: Pummelos and Hybrids

^d Yield is dry weight basis.

^e Includes: Tangelos and Tangors.

^f Includes: Bushberries, Blueberries, Chestnuts, Figs, Guava/Feijoa, Limes, Plumcots, Pluots, Strawberries and Kumquat.



Photographs provided by Richard T. Homer and the University of California, Agriculture and Natural Resources. Some images are copyrighted by the Regents of the University of California and are used with permission.”

Nursery Products

The trend for nurseries in Tulare County was lower per unit prices, but increased stock sales. This increased quantities sold in all categories, but the lower prices led to a lower total value by \$3,688,000 or 5.3%. The largest drop was in Ornamental Trees and Shrubs with a decrease of 6,584,000 or 13%.

Crop	Year	Production		Value	
		Quantity Sold	Unit	Per Unit	Total
Citrus & Subtropical Trees	2003	784,000	Each	8.88	6,962,000
	2002	557,000	Each	9.18	5,113,000
Deciduous Fruit & Nut Trees	2003	518,000	Each	9.04	4,683,000
	2002	619,000	Each	8.38	5,187,000
Grape & Berry Vines	2003	3,674,000	Each	1.79	6,576,000
	2002	3,080,000	Each	1.91	5,883,000
Foliage Plants & Cut Flowers	2003	X	X	X	832,000
	2002	X	X	X	929,000
Ornamental Trees & Shrubs	2003	5,396,000	Each	7.94	42,844,000
	2002	4,663,000	Each	10.60	49,428,000
Miscellaneous*	2003	X	X	X	4,878,000
	2002	X	X	X	3,923,000
TOTAL	2003				\$66,775,000
	2002				\$70,463,000

* Includes: Aquatics, Citrus (Buds, Cuttings & Scions), Christmas Trees, Ground Cover, Irises, Landscape Olive Trees, Palm Trees, Turf, and Vegetable & Flower Plants in Flats.

Apiary Products

Bee Keepers did very well this year with a 20% increase in total value of apiary products. Higher prices for orange honey and increased production and price for pollination raised the total value by \$5,878,000. Demand for quality pollination services was strong which caused an increase in price. In 2003, California passed North Dakota to lead the nation in honey production and total value of honey produced.

Crop	Year	Production		Value	
		Total	Unit	Per Unit	Total
Honey - Orange ^a	2003	14,497,000	Pound	1.56	22,615,000
	2002	15,552,000	Pound	1.30	20,218,000
Other	2003	2,174,000	Pound	1.36	2,957,000
	2002	1,685,000	Pound	1.40	2,359,000
Beeswax	2003	113,000	Pound	1.23	139,000
	2002	150,000	Pound	1.16	174,000
Pollination ^b	2003	179,000	Colony	49.60	8,878,000
	2002	145,000	Colony	41.10	5,960,000
TOTAL	2003				\$34,589,000
	2002				\$28,711,000

^a From bee colonies registered in Tulare County during the 2003 citrus bloom period.

^b Estimated number of colonies required for adequate pollination.

Livestock & Poultry

All populations of livestock increased in 2003 except for Turkeys. Beef cattle enjoyed high prices during 2003. Dairy cattle dropped in value which showed in the \$15,479,000 total value decrease when both beef and dairy cattle and calves were calculated. Lambs, Hogs and Pigs, and turkeys all enjoyed higher per unit prices. The overall increase for livestock and poultry was \$10,678,000 or 2.5%.

Crop	Year	No. of Head	Total Liveweight	Unit	Per Unit	Value	
							Total
Cattle & Calves	2003	571,000	X	Head	653.00		372,863,000
	2002	562,000	X	Head	691.00		388,342,000
Lambs	2003	13,700	1,299,000	Pound	0.88		1,143,000
	2002	13,400	1,273,000	Pound	0.69		878,000
Hogs & Pigs	2003	236,000	X	Head	81.30		19,187,000
	2002	205,000	X	Head	77.70		15,928,000
Turkeys	2003	702,000	18,100,000	Pound	0.38		6,878,000
	2002	850,000	21,900,000	Pound	0.35		7,665,000
Miscellaneous*	2003	X	X	X	X		40,879,000
	2002	X	X	X	X		17,459,000
TOTAL	2003						\$440,950,000
	2002						\$430,272,000

* Includes: Aquaculture, Beneficial Organisms, Chickens, Escargot, Fish Bait, Game Birds, Goats, Pet Food, Pigeons, Pullets, Rabbits, Sheep, and Turkey Breeders.

Livestock & Poultry Products

Milk is for the second time a billion dollar commodity in Tulare County. Production was up along with price to maintain milk as the most valuable commodity. The over production of manure has dropped the price to a level that some dairymen are giving it away.

Crop	Year	Production	Unit	Per Unit	Value	
						Total
Manure ^a	2003	2,538,000	Ton	1.21		3,071,000
	2002	2,771,000	Ton	2.38		6,595,000
Milk - Market	2003	91,940,000	Cwt.	11.58		1,064,665,000
	2002	89,009,000	Cwt.	10.78		959,517,000
Manufacturing	2003	265,000	Cwt.	11.82		3,132,000
	2002	222,000	Cwt.	10.31		2,289,000
Miscellaneous ^b	2003	X	X	X		11,688,000
	2002	X	X	X		9,478,000
TOTAL	2003					\$1,082,556,000
	2002					\$977,879,000

^a Includes: Dairy and Poultry Manure.

^b Includes: Turkey Hatching Eggs, Chicken Eggs (Market & Hatching), and Wool.

Seed Crops

Miscellaneous seed crops experienced an 84% decrease in the number of harvested acres, but had less than a 40% decrease in total value. This means that more valuable seed crops were grown this year as compared to last year. Increased cotton seed acres and price per unit caused the overall total value to increase by more than 11%.

Crop	Year	Harvested Acreage	Per Acre	Production		Value	
				Total	Unit	Per Unit	Total
Cotton - Registered or Certified ^a	2003	4,943	X	3,710	Ton	230.00	853,000
	2002	3,411	X	3,480	Ton	220.00	766,000
Miscellaneous ^c	2003	109	X	X	X	X	223,000
	2002	687	X	X	X	X	369,000
TOTAL	2003	109					\$1,076,000
	2002	687					\$1,135,000

^a Not included in total acreage for "Seed Crops."

^c Includes: Alfalfa, Blackeye Cowpeas, Corn, Oats, and Sunflowers

Industrial Crops

The 39% increase in industrial crops was due to the large increase in the harvest of timber. There was also a slight price increase in timber. Miscellaneous value dropped because there was no reporting for biomass.

Crop	Year	Production		Value	
		Total	Unit	Per Unit	Total
Timber harvested ^a	2003	9,802,000	Board Ft.	0.190	1,862,000
	2002	4,844,000	Board Ft.	0.110	533,000
Miscellaneous ^b	2003	X	X	X	600,000
	2002	X	X	X	1,253,000
TOTAL	2003				\$2,462,000
	2002				\$1,786,000

^a Previous year's production & value based on information provided by Timber Tax Division, Property Taxes Dept., State Board of Equalization.

^b Includes: Biomass, Fire Wood, and Walnut Stumps.

“THE GREATEST SERVICE WHICH CAN BE RENDERED ANY COUNTRY IS TO ADD A USEFUL PLANT TO ITS AGRICULTURE.”

- Thomas Jefferson when writing about his own services to his country. -

SUMMARY

COMMODITY	YEAR	HARVESTED ACREAGE	VALUE
FIELD CROPS	2003	1,273,384	\$290,115,000
	2002	1,251,358	\$299,841,000
VEGETABLE CROP	2003	5,853	\$22,212,000
	2002	6,385	\$28,605,000
FRUIT & NUT CROPS	2003	325,312	\$1,355,787,000
	2002	310,454	\$1,362,392,900
NURSERY PRODUCTS	2003	X	\$66,775,000
	2002	X	\$70,463,000
APIARY PRODUCTS	2003	X	\$34,589,000
	2002	X	\$28,711,000
LIVESTOCK & POULTRY	2003	X	\$440,950,000
	2002	X	\$430,272,000
LIVESTOCK & POULTRY PRODUCTS	2003	X	\$1,082,556,000
	2002	X	\$977,879,000
SEED CROPS	2003	109	\$1,076,000
	2002	687	\$1,135,000
INDUSTRIAL CROPS	2003	X	\$2,462,000
	2002	X	\$1,786,000
GRAND TOTAL	2003	1,604,658	\$3,296,522,000
	2002	1,568,884	\$3,201,084,900

**“AGRICULTURE IS OUR WISEST PERSUIT, BECAUSE
IT WILL IN THE END CONTRIBUTE MOST TO REAL
WEALTH, GOOD MORALS, AND HAPPINESS.”**

Thomas Jefferson in a letter to George Washington (1787)

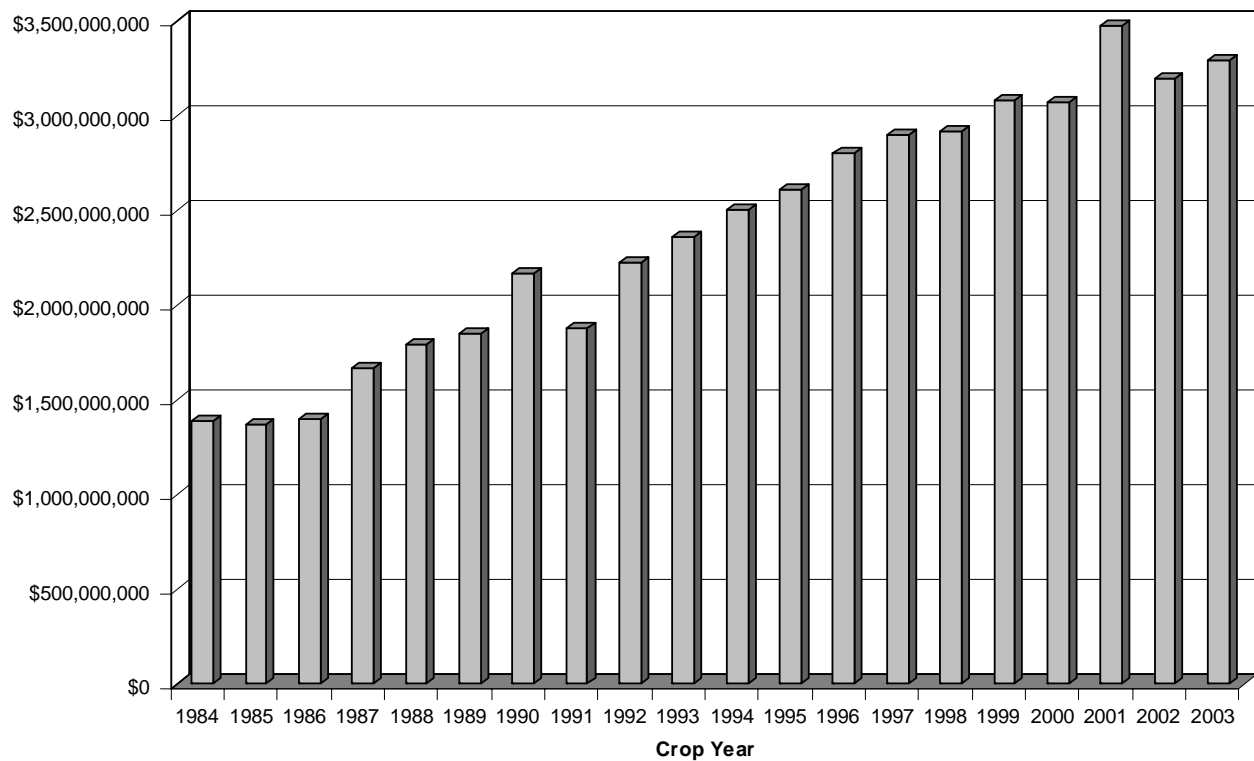
MILLION DOLLAR PRODUCTS

2003 Ranking		2003 Total Value	2002 Ranking
1	Milk	\$1,067,797,000.....	1
2	Oranges - Navel & Valencia	\$442,504,000.....	2
3	Grapes	\$378,511,000.....	3
4	Cattle & Calves	\$372,863,000.....	4
5	Plums	\$85,500,000.....	8
6	Alfalfa - Hay & Silage	\$84,019,000.....	6
7	Peaches - Cling & Freestone	\$70,092,000.....	5
8	Walnuts	\$68,970,00.....	14
9	Nectarines	\$66,474,000.....	7
10	Corn - Grain & Silage	\$66,008,000.....	9
11	Cotton - Lint & Seed	\$61,896,000.....	10
12	Almonds (Meats and Hulls).....	\$47,534,000.....	13
13	Nursery - Ornamental Trees & Shrubs	\$42,844,000.....	11
14	Tangerines	\$32,779,000.....	18
15	Olives	\$26,565,000.....	15
16	Honey	\$25,572,000.....	20
17	Pasture & Range	\$24,162,000.....	19
18	Lemons	\$23,105,000.....	17
19	Silage - Small Grain.....	\$22,366,000.....	16
20	Pistachio Nuts	\$21,935,000.....	12
21	Cherries	\$19,321,000.....	22
22	Hogs & Pigs	\$19,187,000.....	21
23	Kiwifruit	\$18,816,000.....	24
24	Wheat - Grain	\$15,750,000.....	23
25	Grapefruit	\$14,746,000.....	26
26	Pollination	\$8,878,000.....	30
27	Persimmons	\$7,742,000.....	33
28	Nursery - Citrus & Subtropical Trees	\$6,962,000.....	35
29	Turkeys	\$6,878,000.....	27
30	Nursery - Grape & Berry Vines	\$6,576,000.....	31
31	Prunes	\$6,136,000.....	25
32	Pomegranates	\$5,863,000.....	32
33	Cucumbers	\$4,882,000.....	47
34	Nursery - Deciduous Fruit & Nut Trees	\$4,683,000.....	34
35	Beans - Dry	\$4,174,000.....	36
36	Sudan Grass	\$3,888,000.....	44
37	Broccoli	\$3,272,000.....	37
38	Pears & Asian Pears	\$3,263,000.....	38
39	Apples	\$3,232,000.....	39
40	Manure	\$3,071,000.....	28
41	Apricots	\$2,629,000.....	40
42	Avocados	\$1,927,000.....	43
43	Pecans	\$1,728,000.....	41
44	Sugar Beets	\$1,625,000.....	42
45	Quince	\$1,485,000.....	46
46	Snap Beans - Fresh	\$1,212,000.....	29
47	Lambs	\$1,143,000.....	
48	Tomatoes - Fresh.....	\$1,014,000.....	

**TWENTY YEAR COMPARISON OF AGRICULTURE
INCOME IN TULARE COUNTY
1984-2003**

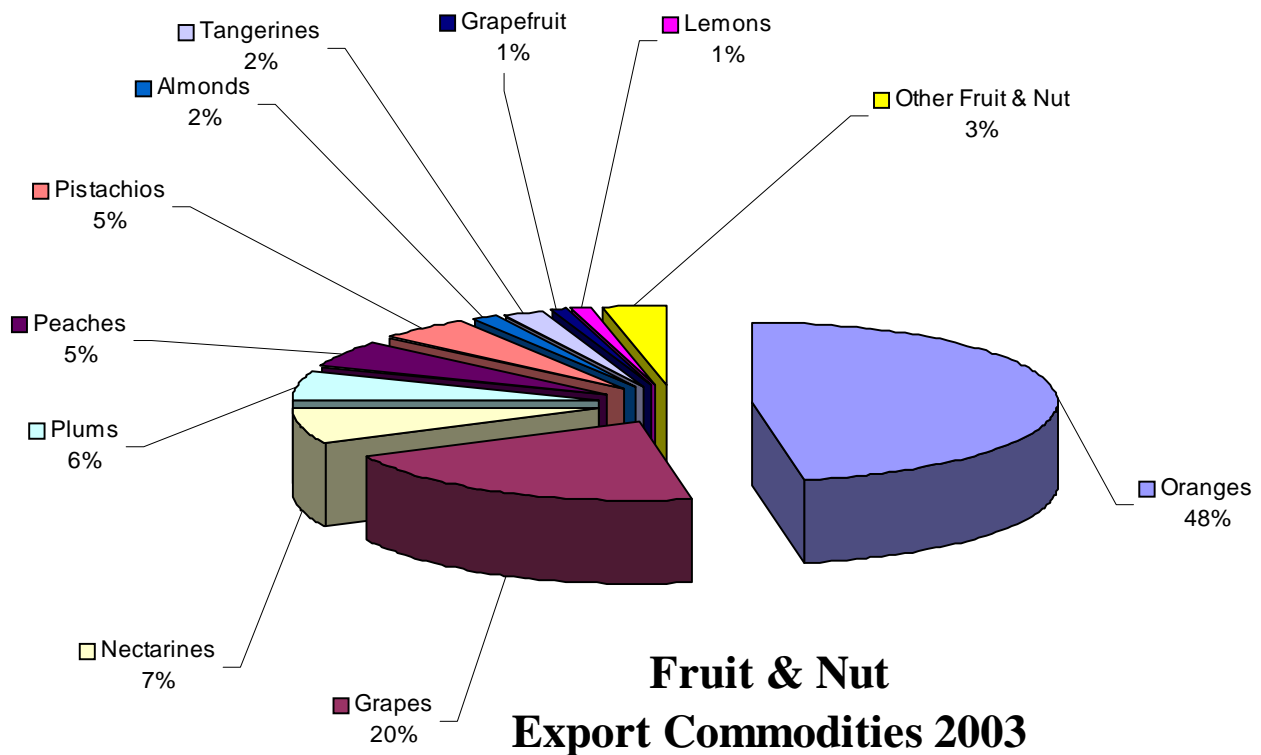
1984	1,392,273,500	1994	2,504,944,000
1985	1,368,387,100	1995	2,611,088,000
1986	1,400,743,000	1996	2,805,452,000
1987	1,667,201,900	1997	2,900,892,000
1988	1,791,151,200	1998	2,919,528,800
1989	1,853,101,600	1999	3,078,369,000
1990	2,169,448,000	2000	3,068,648,200
1991	1,878,425,400	2001	3,475,999,600
1992	2,221,612,100	2002	3,201,084,900
1993	2,365,202,000	2003	3,296,522,000

Tulare County 20 Year Comparison

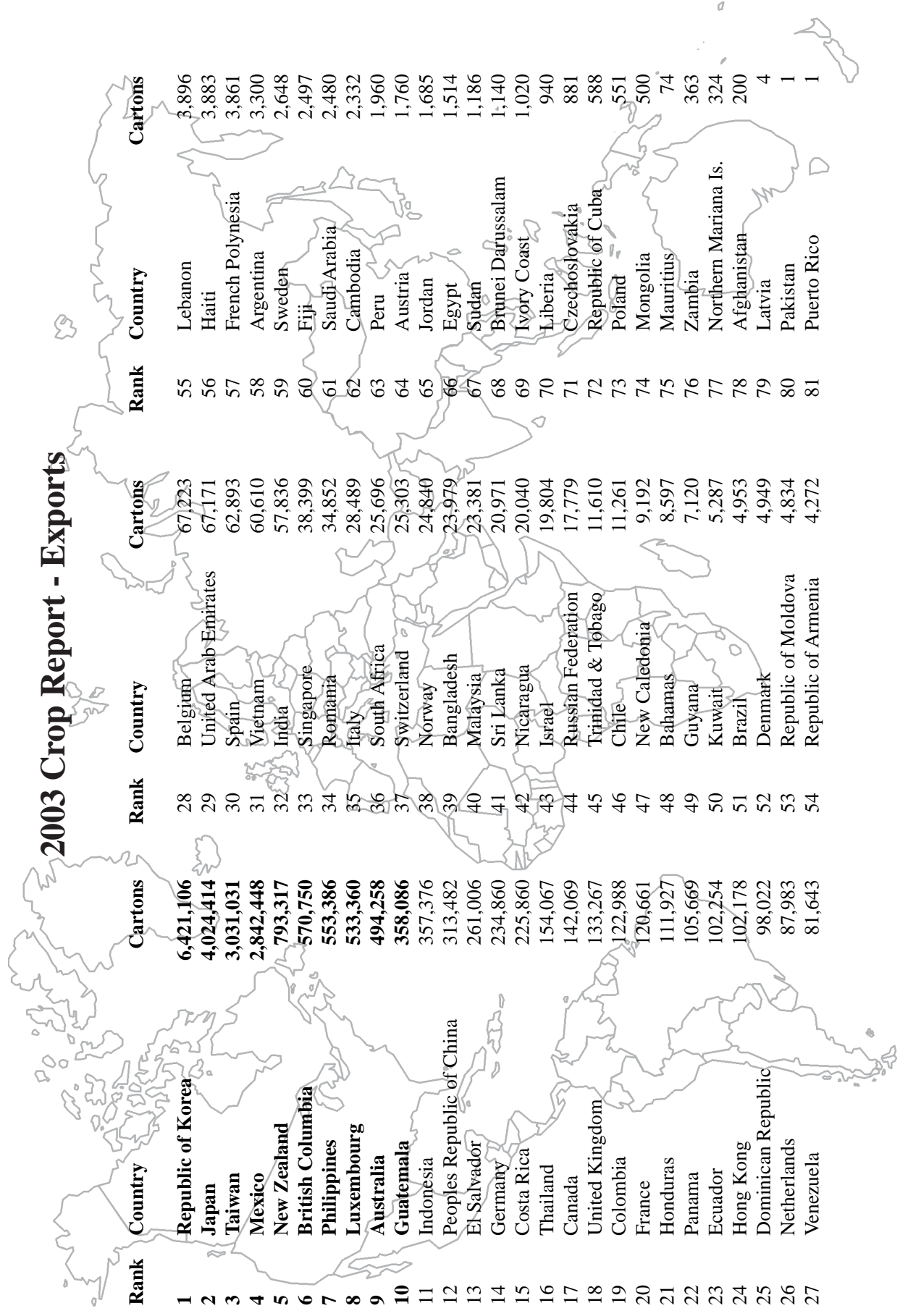


STANDARD CARTON WEIGHTS (LBS.) FOR FRESH MARKET COMMODITIES

Almonds	50	Lemons	40
Apples	40	Nectarines	25
Apricots	24	Oranges	37½
Avocados	25	Peaches - Freestone	25
Beans, Snap	30	Pears, Asian Pears	11
Broccoli	23	Persimmons	11
Cauliflower	25	Pistachios (roasted)	25
Cherries	18	Plums	28
Corn, Sweet	50	Pomegranates	28
Figs	8	Prunes, Fresh	28
Grapefruit	36	Quince	22
Grapes, Juice	36	Squash	25
Grapes, Table	21	Tangerines	25
Honeydew Melons	30	Tomatoes	25
Kiwifruit	7½		



2003 Crop Report - Exports



Rank	Country	Cartons	Rank	Country	Cartons	Rank	Country	Cartons
1	Republic of Korea	6,421,106	28	Belgium	67,223	55	Lebanon	3,896
2	Japan	4,024,414	29	United Arab Emirates	67,171	56	Haiti	3,883
3	Taiwan	3,031,031	30	Spain	62,893	57	French Polynesia	3,861
4	Mexico	2,842,448	31	Vietnam	60,610	58	Argentina	3,300
5	New Zealand	793,317	32	India	57,836	59	Sweden	2,648
6	British Columbia	570,750	33	Singapore	38,399	60	Fiji	2,497
7	Philippines	553,386	34	Romania	34,852	61	Saudi Arabia	2,480
8	Luxembourg	533,360	35	Italy	28,489	62	Cambodia	2,332
9	Australia	494,258	36	South Africa	25,696	63	Peru	1,960
10	Guatemala	358,086	37	Switzerland	25,303	64	Austria	1,760
11	Indonesia	357,376	38	Norway	24,840	65	Jordan	1,685
12	Peoples Republic of China	313,482	39	Bangladesh	23,979	66	Egypt	1,514
13	El Salvador	261,006	40	Malaysia	23,381	67	Sudan	1,186
14	Germany	234,860	41	Sri Lanka	20,971	68	Brunei Darussalam	1,140
15	Costa Rica	225,860	42	Nicaragua	20,040	69	Ivory Coast	1,020
16	Thailand	154,067	43	Israel	19,804	70	Liberia	940
17	Canada	142,069	44	Russian Federation	17,779	71	Czechoslovakia	881
18	United Kingdom	133,267	45	Trinidad & Tobago	11,610	72	Republic of Cuba	588
19	Colombia	122,988	46	Chile	11,261	73	Poland	551
20	France	120,661	47	New Caledonia	9,192	74	Mongolia	500
21	Honduras	111,927	48	Bahamas	8,597	75	Mauritius	74
22	Panama	105,669	49	Guyana	7,120	76	Zambia	363
23	Ecuador	102,254	50	Kuwait	5,287	77	Northern Mariana Is.	324
24	Hong Kong	102,178	51	Brazil	4,953	78	Afghanistan	200
25	Dominican Republic	98,022	52	Denmark	4,949	79	Latvia	4
26	Netherlands	87,983	53	Republic of Moldova	4,834	80	Pakistan	1
27	Venezuela	81,643	54	Republic of Armenia	4,272	81	Puerto Rico	1

Tulare County Sustainable Agricultural Reporting - 2003

County Biological Control

Pest	Agent/Mechanism	Program Scope
Aphids <i>Aphis</i> spp.	Asian Ladybird Beetle <i>Harmonia axyridis</i>	3 sites
Ash Whitefly <i>Siphoninus phillyreae</i>	Parasitic Wasp <i>Encarsia inaron</i>	Upon demand
	Ladybird Beetle <i>Cleitostethus arcuatus</i>	Upon demand
Bull Thistle <i>Cirsium vulgare</i>	Seedhead Gall Fly <i>Urophora stylata</i>	7 sites
Comstock Mealybug <i>Pseudococcus comstocki</i>	Parasitic Wasps <i>Pseudoaphycus malinus</i> <i>Allotropa burrelli</i>	Upon demand
Cottony-Cushion Scale <i>Icerya purchasi</i>	Parasitic Fly <i>Cryptochetum iceryae</i>	Upon demand
	Vedalia Beetle <i>Rodolia cardinalis</i>	3 sites
Italian Thistle <i>Carduus pycnocephalus</i>	Seedhead Weevil <i>Rhinocylus conicus</i>	2 sites
Milk Thistle <i>Silybum marianum</i>	Seedhead Weevil <i>Rhinocylus conicus</i>	Upon demand
Mulberry Whitefly <i>Tetraleurodes mori</i>	Ladybird Beetle <i>Delphastus dejavu</i>	Upon demand
Puncture Vine <i>Tribulus terrestris</i>	Seed & Stem Weevils * <i>Microlarinus lareynii</i> <i>Microlarinus lypriformis</i>	Upon demand
Russian Thistle <i>Salsola australis</i>	Casebearer Moth <i>Coleophora klimeschiella</i>	Upon demand
Silverleaf Whitefly <i>Bemesia argentifolia</i>	Parasitic Wasps <i>Eretmocerus</i> spp.	1 site
Yellow Star Thistle <i>Centaurea solstitialis</i>	Flowerhead Bud Weevil <i>Bangasternus orientalis</i>	Upon demand
	Flower Weevil <i>Larinus curtus</i>	2 sites
	Hairy Weevil * <i>Eustenopus villosus</i>	1 site
	Peacock Fly <i>Chaetorellia succinea</i>	Upon demand
	Yellow Star Gall Fly <i>Urophora sirunaseva</i>	Upon demand

*Also provided insect agents to other out-of-county agencies.

County Pest Detection

Target Pest	Number of Traps	Host Crops
European Corn Borer	10	Corn/Sorghum
European Pine Shoot Moth	10	Pines
Glassy-winged Sharpshooter	6,624	Various Trees & Shrubs
Gypsy Moth	146	Shade Trees
Japanese Beetle	84	Turf & Flowers
Khapra Beetle	54	Stored Food Products
Mediterranean Fruit Fly	529	Fruit Trees
Melon Fruit Fly	91	Vegetables
Mexican/Caribbean Fruit Flies	153	Fruit Trees
Oriental Fruit Fly	89	Fruit Trees

County Pest Eradication

Pest	Agent/Mechanism	Program Scope
Alligatorweed <i>Alternanthera philoxeroides</i>	Mechanical/Chemical Control	105 Plants
Pink Bollworm <i>Pectinophora gossypiella</i>	Mechanical/Host Free Period	56,990 Acres
Scotch Thistle <i>Onopordum acanthium</i>	Mechanical/Chemical Control	General Distribution

Registered Organic and Certified Producer

Farming Statistics

Organic Growers	60
Acres of Organic Cropland	2,248
Organic Packers/Shippers	7
Certified Producers Certificates	143

Organic Crops

Grapes	817 Acres
Citrus	555 Acres
Tree Fruits	468 Acres
Nuts	112 Acres
Olives	111 Acres
Vegetables/Melons	52 Acres
Kiwi	44 Acres
Apples/Pears	36 Acres
Other	53 Acres
Dairy Cows	1,080 Head

County Pest Exclusion

Pest Rejections	Setting	Program Scope
A - Rated Hydrilla (aquatic weed) <i>Hydrilla verticillata</i>	Incoming Shipment	1 rejection/destroyed
Apple Maggot <i>Rhagoletis pomonella</i>	Incoming Shipment	1 rejection/destroyed

Burrowing Nematode <i>Radophilus similis</i>	Incoming Shipments	7 rejections/destroyed
Caribbean Fruit Fly <i>Anastrepha suspensa</i>	Incoming Shipments	2 rejections/destroyed
Cherry Fruit Fly <i>Rhagoletis indiffrens</i>	Incoming Shipment	1 rejection/destroyed
Citrus Canker <i>Xanthomonas Campestris citri</i>	Incoming Shipment	1 rejection/destroyed
Citrus Pests	Incoming Shipment	1 rejection/destroyed
European Corn Borer <i>Ostrinia nubilalis</i>	Incoming Shipment	1 rejection/destroyed
Glassy-winged Sharpshooter <i>Homalodisca coagulata</i>	Incoming Shipments	4 rejections/returned or destroyed
Golden Nematode <i>Globodera rostochiensis</i>	Incoming Shipment	1 rejection/destroyed
Gypsy Moth <i>Lymantria dispar</i>	Incoming Shipment	1 rejection/destroyed
Japanese Beetle <i>Popilla japonica</i>	Incoming Shipments	4 rejections/destroyed
Markings	Incoming Shipments	64 rejections/destroyed or released
Ozonium Root Rot <i>Phymatotrichum omnivorum</i>	Incoming Shipments	5 rejections/destroyed or released
Persimmon Root Borer <i>Sannina uroceriformis</i>	Incoming Shipment	1 rejection/destroyed
Plum Curculio <i>Conotrachelus nenuphar</i>	Incoming Shipments	1 rejection/destroyed
Walnut Pests	Incoming Shipment	1 rejection/destroyed
West Indian Sugarcane Root Borer <i>Diaprepes abbreviatus</i>	Incoming Shipment	1 rejection/destroyed
Q- Rated Ants	Incoming Shipments	2 rejections/destroyed
Q - Rated Fungus <i>Alternaria sp.</i>	Retail Markets	3 rejections/destroyed
Q - Rated Longhorned Beetle <i>Chloroporus strobilicola</i>	Retail Markets	7 rejections/destroyed
Q - Rated Mealybug <i>Pseudococcus odermatti</i>	Incoming Shipment	1 rejection/destroyed
Q - Rated Mint Seeds	Incoming Shipment	1 rejection/destroyed



Tulare County
Agricultural Commissioner/Sealer
4437 South Laspina Street
Tulare, CA 93274

RESORTED
FIRST CLASS
U.S. POSTAGE
PAID
VISALIA, CA
PERMIT #142