



# Tulare County Agricultural Commissioner/Sealer

---

Tom Tucker, Agricultural Commissioner  
Sealer of Weights and Measures  
Christopher Greer, Assistant Agricultural Commissioner  
Sealer of Weights and Measures

## INDUSTRY NEWS RELEASE – CITRUS GROWERS/ APPLICATORS/ PEST CONTROL ADVISORS/ APIARIST

This notice is to inform all affected Citrus growers, applicators, Pest Control Advisors / Business / Dealerships, and Apiarist of the proposed redistricting of the Tulare County Citrus Bloom Districts.

Each year, the Tulare County Agricultural Commissioner evaluates the Citrus Bloom Districts to determine if a change needs to be made. Until now, the current District lines upheld the current regulations defined in the Food & Ag Code & California Code of regulations as it pertains to Citrus Bloom and Citrus Petal Fall.

However, with changes in weather conditions over the past several years as well as growing seasons, growing areas, and different citrus varieties being planted, new districts have been formed and new district lines drawn. These lines were best determined by cooperation with Citrus growers, Pest Control Advisors, and apiarist in Tulare County in conjunction with the Agricultural Commissioner and his staff.

As a recap, Citrus Bloom is when there is 10% citrus bloom on the North side of the tree in a District. This signifies the time of the year where pesticide applications have additional restrictions placed upon them when planning a treatment and application to Citrus Groves. This is to assist in overall bee health, awareness, and lessen the number of chemical applications that could ultimately harm the large number of colonies within Tulare County.

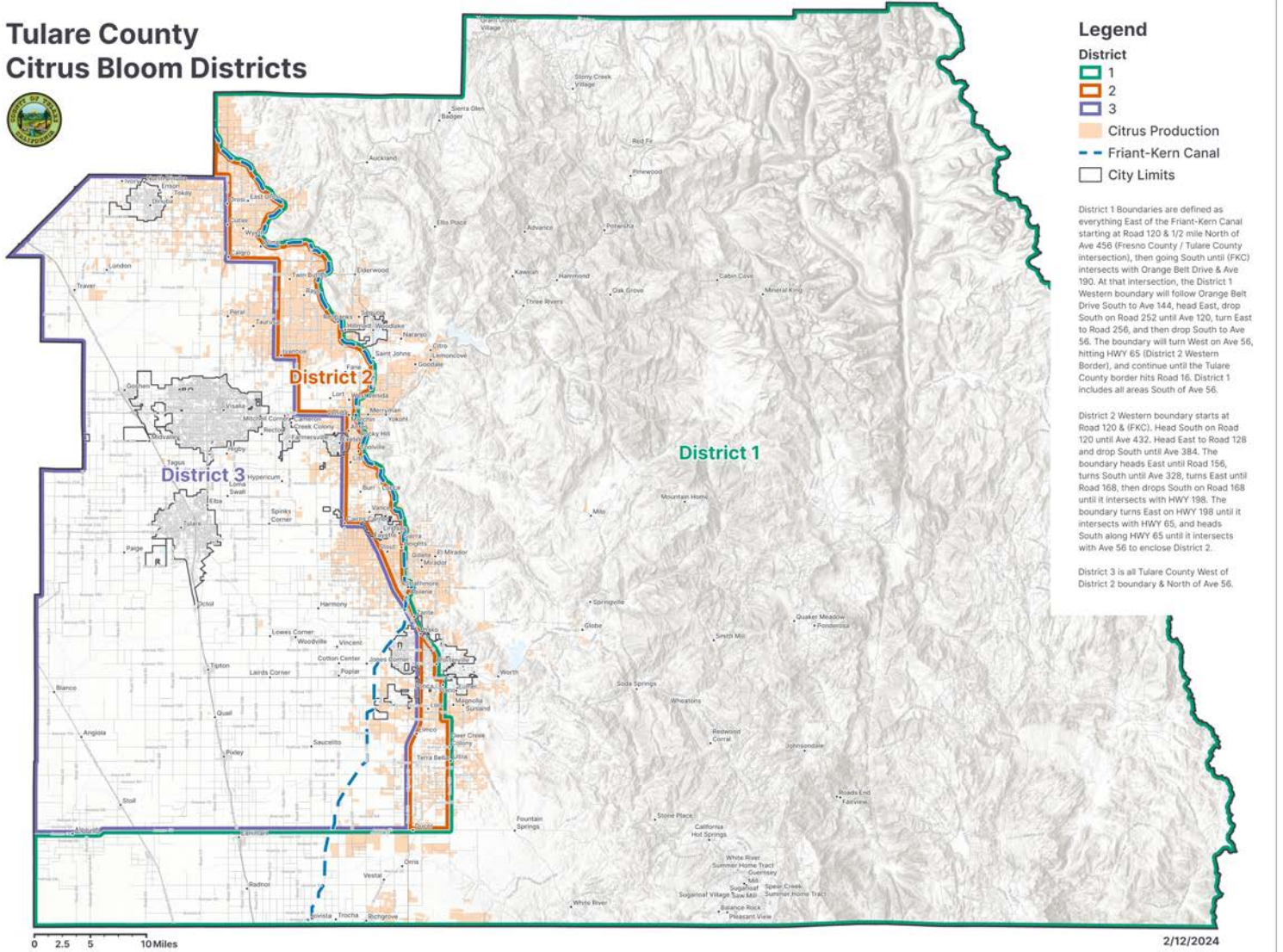
Conversely, the Agricultural Commissioner will also call Citrus Petal Fall, this is when 75% of the petals on the North side of the tree have fallen. Once declared, this is notice to Apiarist to move their colonies to other Districts or areas outside of Citrus to prevent potential interaction with chemicals that may be harmful to honeybees.

We encourage all that receive this notice and are involved in the Agricultural Industry as it pertains to chemical applications and Citrus growing to either email or call our office at the below contact information to provide input or opinions they may have.

Tulare County Agricultural Commissioner's Department  
4437 S. Laspina Street Ste A  
Tulare Ca 93274  
559-684-3350  
[Aginfo@tularecounty.ca.gov](mailto:Aginfo@tularecounty.ca.gov)

Please see the proposed new District map on the following page as mentioned above. If you would like a copy of the proposed new district maps in a different format, please contact our office as well.

# Tulare County Citrus Bloom Districts



\*If you would like to provide input on your local surroundings as it pertains to Citrus Bloom & Petal Fall dates for declaration, please submit your comment to [AgInfo@tularecounty.ca.gov](mailto:AgInfo@tularecounty.ca.gov).

Thank you,

Tom Tucker  
Agricultural Commissioner  
Sealer of Weights & Measures  
County of Tulare