

2004

**Tulare County Annual
Crop and Livestock Report**



Tulare County Agricultural Commissioner/Sealer

Gary Kunkel, Agricultural Commissioner
Sealer of Weights and Measures
William R. Appleby, Assistant
Commissioner/Sealer

A. G. Kawamura, Secretary
California Department of Food and Agriculture

April 2005

and

Honorable Board of Supervisors
County of Tulare

Connie Conway, Chairman Phillip Cox
Allen Ishida Jim Maples
J. Steven Worthley

Brian Haddix, County Administrative Officer

It is my pleasure to submit the 2004 Tulare County Annual Crop and Livestock Report. This report is produced in accordance with Sections 2272 and 2279 of the California Food and Agricultural Code and summarizes the acreage, production, and value of Tulare County's agricultural commodities. The figures contained herein represent gross returns to the producer and do not reflect actual net profit.

This year's total value of all commodities is **\$4,039,524,000**. This represents an increase of \$743,002,000 or 23 percent above last year's value.

The price of market milk increased by \$3.00 per hundredweight (cwt) and volume increased by 359,000 cwt. The total value of milk increased by \$281,064,000 over that of 2003. Beef cattle and calf numbers improved this year with better range conditions. Along with the dairy herd population comes a commensurate increase in overall number of animals destined for meat and milk production. This resulted in an increase of some \$63,573,000 in the value of cattle and calves.

Total value of field crops increased by 45% or \$130,586,000. This is attributable to good growing conditions, resulting in a substantial increase in total value. Vegetable crops increased by 68%, primarily because of a significant increase in acreage. Tomatoes also experienced strong increases in both acreage and value.

The fruit and nut crop category, one of our largest segments, also made significant gains. Almonds, grapes, kiwifruit, lemons, nectarines, oranges, and pistachios experienced increases in overall value. Nurseries had a slight increase in total value of 4% or \$2,648,000. Apiary products had a 19% decrease, as beekeepers struggle with lower per unit value. Seed crops saw an increase in total value of 119%, along with a 74% increase in acreage. Meanwhile, industrial crops grew by 29% in over all production value.

Tulare County's grand total for all commodities is the highest in its history, topping four billion dollars for the first time. Our agricultural diversity remains our strength. Although individual commodities and growers may struggle from year to year, Tulare County continues to grow a wide variety of high quality crops that provide food and fiber for the world.

I wish to express my sincere appreciation to the many producers, processors, and agencies, both private and public, which supported our efforts in producing this report. I would also like to thank all the members of my staff, particularly Michelle Stanley, Melinda Lancaster, and Dennis Haines. Without their hard work and valuable input, the publication of this report would not have been possible.

Respectfully submitted,

Gary W. Kunkel
Agricultural Commissioner/Sealer

Agricultural Commissioner/Sealer of Weights & Measures

Gary W. Kunkel

Assistant Agricultural Commissioner/Sealer

William R. Appleby

Deputy Agricultural Commissioner/Sealer

Brian Cox, Billy Deavours, Marilyn Kinoshita

Systems and Procedures Analyst

David Greenwood (Consultant)

Supervising Agricultural & Standards Inspectors

Donald Borges, David Case, Rafael Garcia Jr. , Jerry McElhaney

Agricultural Staff Biologist

R. Dennis Haines

District Agricultural & Standards Inspectors

Karrie Batchelor	Chris Francone	Robert Mann	John Moreno	Stoney Savage
Dan Bigham	David Gould	Robert Milner	Gabriella Nunez	Curt Steggall
Steven Brown	Kelly LeGrand		Jim Qualls	Paul Sihota
Greg Dunbar				Deo Tigulo

Agricultural & Standards Inspectors

Dexter Bennett	Kristyna Cotta	Luis Gomez	Gary Mann	Martin Munoz
David Bryant	Rene Esquivel	Pedro Huerta Jr.	Hugh McLaurin	Sundip Rai
Marvin Clark	Roy Fontaine	Gavin Iacono	Craig Mills	Michelle Stanley
Albert Coronel	Lovejot Gill	Kurt Kilburn	Sabrina Moos	Ben Yosako
Scott Cornett		Melinda Lancaster		Rick Yraceburu

Inspector Aid, Extra Help Inspectors & Pest Detection Trappers

Rene Benavidez	Kerry Ladrigan	Nicole Pearson	Sharon Plum	Martin Teixeira
Ronald Carter	Joseph Lerda	Eusebio Perez	Esias Rodriguez	Richard Vargas
Wade DeCesare	Klay Mittel	David Plum	Michael Spencer	Andrew Wachner
Diana Flowers	Leonard Ogans	Melissa Plum	Evan Sutherland	Jonathan Weir

Staff Services Analyst II

Brenda Plum

Senior Account Clerk

Patricia McCurry

Office Assistant IV

Gloria Schoenborn

Office Assistant III

Diana Cisneros Anita Letsinger Jesusita Martinez Margie Renfro

Office Assistant - Extra Help

Annette Castro

Tulare County Agricultural Offices

TULARE	4437 South Laspina Street	(559) 685 - 3323
AG WAREHOUSE	1473 Ave 256, Visalia	(559) 733 - 6476
DINUBA (1)	324 West Tulare, Suite 102	(559) 591 - 5842
DINUBA (2)	324 West Tulare, Suite 102	(559) 591 - 5855
EXETER	101 West Pine Street	(559) 592 - 4075
LINDSAY	240 East Honolulu	(559) 562 - 6025
PIXLEY	188 South Main Street	(559) 757 - 3853
PORTERVILLE	25 South Hockett	(559) 782 - 4787
WOODLAKE	250 Antelope, Suite L	(559) 564 - 8320



TABLE OF CONTENTS

COUNTY ACREAGE-PERMANENT PLANTINGS	1
FIELD CROPS	2-3
VEGETABLE CROPS	3
FRUIT AND NUT CROPS	4-6
NURSERY PRODUCTS	7
APIARY PRODUCTS	7
LIVESTOCK AND POULTRY	8
LIVESTOCK AND POULTRY PRODUCTS	8
SEED CROPS	9
INDUSTRIAL CROPS	9
SUMMARY	10
MILLION DOLLAR PRODUCTS	11
TWENTY YEAR VALUE COMPARISON	12
STANDARD CARTON WEIGHTS	13
PRODUCE EXPORT DATA	13-14
ANNUAL SUSTAINABLE AGRICULTURE	15-17

TULARE COUNTY

ACREAGE-PERMANENT PLANTINGS

	BEARING ACREAGE	NON-BEARING ACREAGE	TOTAL ACREAGE
<u>CITRUS</u>			
Grapefruit & Pummelos	1,547	82	1,629
Lemons	3,496	234	3,730
Limes	12	0	12
Navels	75,026	3,989	79,015
Valencias	23,886	135	24,021
Tangerines & Tangelos	2,653	1,975	4,628
Total Citrus	106,620	6,415	113,035
<u>DECIDUOUS & GRAPES</u>			
Almonds	17,381	1,626	19,007
Apples	394	0	394
Apricots	559	87	646
Avocados	381	0	381
Cherries	1,664	396	2,060
Figs	34	0	34
Grapes			
Raisin	24,368	299	24,667
Table	26,833	826	27,659
Wine	9,702	255	9,957
Kiwifruit	2,185	47	2,232
Nectarines	14,800	757	15,557
Olives	15,620	95	15,715
Peaches			
Cling	1,289	49	1,338
Freestone	12,095	1,033	13,128
Pears & Asian Pears	445	12	457
Pecans	830	30	860
Persimmons	464	235	699
Pistachio Nuts	11,896	897	12,793
Plums	17,077	901	17,978
Pomegranates	1,253	69	1,322
Prunes - Dried Plums	5,009	339	5,348
Quince	237	26	263
Walnuts	28,512	1,128	29,640
Miscellaneous*	781	436	1,217
TOTAL			
Total Grapes	60,903	1,380	62,283
Total Orchard Crops	239,526	14,578	254,104
GRAND TOTAL	300,429	15,958	316,387

* Includes: Chestnuts, Dates, Grape Rootstock, Guava/Feijoa, and Plumcots/Plucots/Pluots

Field Crops

The total value of field crops increased by 45% or \$130,586,000 in 2004. Field crops had more harvested acres and excellent growing conditions. Crops that are used by the dairy industry continued to gain in importance and value.

Crop	Year	Harvested Acreage	Per Acre	Production		Value	
				Total	Unit	Per Unit	Total
Alfalfa - Hay	2004	101,900	9.17	934,000	Ton	138.00	128,892,000
	2003	102,449	7.83	802,000	Ton	99.20	79,558,000
Silage ^a	2004	X	3.00	136,000	Ton	28.00	3,808,000
	2003	X	2.58	136,000	Ton	32.80	4,461,000
Barley	2004	1,890	2.50	4,720	Ton	95.00	448,000
	2003	1,597	2.50	3,990	Ton	105.00	419,000
Beans - Dry	2004	3,890	1.67	6,500	Ton	520.00	3,380,000
	2003	4,921	1.57	7,730	Ton	540.00	4,174,000
Corn - Grain	2004	3,000	5.97	17,900	Ton	94.20	1,686,000
	2003	2,900	5.55	16,100	Ton	76.30	1,228,000
Silage	2004	136,500	27.50	3,754,000	Ton	24.90	93,475,000
	2003	132,155	22.80	3,013,000	Ton	21.50	64,780,000
Cotton - Lint ^b	2004	64,180	1,780.00	231,000	Bale	74.10	85,508,000
	2003	56,990	1,211.00	139,000	Bale	75.40	52,037,000
Seed	2004	X	X	79,200	Ton	160.00	12,672,000
	2003	X	X	47,400	Ton	190.00	9,006,000
Pasture & Range (Irrigated)	2004	110,000	X	X	Acre	130.00	14,300,000
	2003	109,950	X	X	Acre	130.00	14,294,000
Native	2004	615,000	X	X	Acre	20.00	12,300,000
	2003	615,000	X	X	Acre	13.00	7,995,000
Other	2004	84,130	X	X	Acre	33.00	2,776,000
	2003	85,122	X	X	Acre	22.00	1,873,000
Silage - Small Grain ^c	2004	95,820	16.00	1,533,000	Ton	19.00	29,127,000
	2003	83,368	14.50	1,209,000	Ton	18.50	22,366,000
Sorghum Grain	2004	5,140	2.00	10,300	Ton	82.00	845,000
	2003	2,710	2.65	7,180	Ton	92.50	664,000
Sudan Grass ^d	2004	10,780	30.00	323,000	Ton	18.00	5,814,000
	2003	8,115	30.00	243,000	Ton	16.00	3,888,000
Sugar Beets	2004	750	43.50	32,600	Ton	35.10	1,144,000
	2003	1,233	40.80	50,300	Ton	32.30	1,625,000
Wheat	2004	51,650	3.46	179,000	Ton	107.00	19,153,000
	2003	60,374	2.49	150,000	Ton	105.00	15,750,000

Field Crops continued

Crop	Year	Harvested Acreage	Per Acre	Production			Value	
				Total	Unit	Per Unit	Total	
Miscellaneous ^e	2004	24,300	X	X	X	X	5,373,000	
	2003	6,500	X	X	X	X	5,997,000	
TOTAL	2004	1,308,930					\$420,701,000	
	2003	1,273,384					\$290,115,000	

^a Green weight basis.

^b Yield per acre in pounds lint, production total in 495 lbs net weight bales, unit value in dollars per lint cwt.

^c Includes: Barley, Oats, Sorghum, Wheat, and Winter Forage.

^d Sudan Grass reported as green chop in 2004.

^e Includes: Bean Screenings & Straw, Oat Grain, Oat Hay, Safflower, Sunflowers, and Straw.

Vegetable Crops

Increased harvested acreage resulted in a gain of \$15,040,000 or 68% for all vegetable crops. Fresh tomatoes enjoyed a substantial increase in acreage and total value. Good growing conditions and quality were experienced in the 2004 growing season.

Crop	Year	Harvested Acreage	Per Acre	Production			Value	
				Total	Unit	Per Unit	Total	
Broccoli - Processed	2004	1,760	3.35	5,900	Ton	562.00	3,316,000	
	2003	1,169	5.78	6,760	Ton	484.00	3,272,000	
Cauliflower	2004	73	6.87	502	Ton	387.00	194,000	
	2003	57	7.19	410	Ton	625.00	256,000	
Cucumbers	2004	537	10.60	5,690	Ton	690.00	3,926,000	
	2003	583	13.30	7,750	Ton	630.00	4,882,000	
Snap Beans - Fresh	2004	261	4.81	1,260	Ton	1,340.00	1,688,000	
	2003	553	2.17	1,200	Ton	1,010.00	1,212,000	
Sweet Corn	2004	249	10.80	2,690	Ton	571.00	1,536,000	
	2003	255	10.00	2,550	Ton	215.00	548,000	
Tomatoes - Fresh	2004	396	19.30	7,640	Ton	732.00	5,592,000	
	2003	91	17.70	1,610	Ton	630.00	1,014,000	
Miscellaneous*	2004	4,640	X	X	X	X	21,000,000	
	2003	3,145	X	X	X	X	11,028,000	
TOTAL	2004	7,916					\$37,252,000	
	2003	5,853					\$22,212,000	

* Includes: Artichokes, Asparagus, Assorted Peppers, Basil, Bean - Lima, Beets, Brussel Sprouts, Cabbage, Carrots, Chives, Dill, Eggplant, Fennel, Garlic, Gourds, Kale, Lavender, Lettuce, Lovage, Melon - Bitter, Melon - Cantaloupe, Melons - Honeydew, Melons Assorted, Mint, Mushrooms, Okra, Onions, Oregano, Parsley, Peas, Potatoes, Pumpkins, Radishes, Rosemary, Sage, Spinach, Squash, Tomatillos, Processed Tomatoes, Turnips, Watermelon, Yams, Zucchini.

Fruit and Nut Crops

Total value increased by \$261,345,000. Crops that did well with increases in total value were: Almonds, Grapes, Kiwifruit, Lemons, Nectarines, Oranges, Pistachios, and Plums.

Crop	Year	Harvested Acreage	Per Acre	Production		Value	
				Total	Unit	Per Unit	Total
Almonds - Meats	2004	17,381	1.17	20,300	Ton	4,300.00	87,290,000
	2003	15,954	0.92	14,700	Ton	3,000.00	44,100,000
Hulls	2004	X	X	39,800	Ton	84.60	3,367,000
	2003	X	X	40,400	Ton	85.00	3,434,000
Apples	2004	394	9.00	3,550	Ton	700.00	2,485,000
	2003	665	6.72	4,470	Ton	723.00	3,232,000
Apricots	2004	559	4.98	2,780	Ton	650.00	1,807,000
	2003	676	4.04	2,730	Ton	963.00	2,629,000
Cherries	2004	1,664	2.32	3,860	Ton	3,000.00	11,580,000
	2003	1,744	2.14	3,730	Ton	5,180.00	19,321,000
Grapes - Total	2004	60,903	X	X	X	X	393,583,000
	2003	73,064	X	X	X	X	378,511,000
Raisin Varieties	2004	24,368	10.80	X	X	X	X
	2003	30,580	9.34	X	X	X	X
Canned	2004	X	X	22,000	Ton	265.00	5,830,000
	2003	X	X	22,500	Ton	244.00	5,490,000
Crushed ^a	2004	X	X	78,300	Ton	200.00	15,660,000
	2003	X	X	49,900	Ton	96.10	4,795,000
Dried ^b	2004	X	X	25,000	Ton	1,180.00	29,500,000
	2003	X	X	32,300	Ton	571.00	18,443,000
Fresh	2004	X	X	50,700	Ton	1,010.00	51,207,000
	2003	X	X	68,800	Ton	964.00	66,323,000
Table Varieties	2004	26,833	9.11	X	X	X	X
	2003	28,830	8.43	X	X	X	X
Crushed	2004	X	X	43,500	Ton	199.00	8,656,000
	2003	X	X	20,900	Ton	70.90	1,482,000
Fresh	2004	X	X	201,000	Ton	1,300.00	261,300,000
	2003	X	X	222,000	Ton	1,160.00	257,520,000
Wine Varieties	2004	9,702	8.83	X	X	X	X
	2003	13,654	9.23	X	X	X	X
Crushed	2004	X	X	83,200	Ton	235.00	19,552,000
	2003	X	X	122,000	Ton	179.00	21,838,000
Juice	2004	X	X	2,430	Ton	773.00	1,878,000
	2003	X	X	4,730	Ton	554.00	2,620,000

Fruit and Nut Crops continued

Crop	Year	Harvested Acreage	Production		Unit	Value	
			Per Acre	Total		Per Unit	Total
Grapefruit - Fresh ^c	2004	1,547	12.30	19,000	Ton	508.00	9,652,000
	2003	2,033	12.60	25,600	Ton	576.00	14,746,000
Kiwifruit	2004	2,185	8.33	18,200	Ton	1,470.00	26,754,000
	2003	1,730	8.48	14,700	Ton	1,280.00	18,816,000
Lemons - Fresh	2004	3,496	13.10	38,100	Ton	760.00	28,956,000
	2003	3,781	13.40	33,900	Ton	674.00	22,849,000
Processed	2004	X	X	7,650	Ton	15.30	117,000
	2003	X	X	16,700	Ton	15.30	256,000
Nectarines - Fresh	2004	14,800	7.96	118,000	Ton	735.00	86,730,000
	2003	15,740	6.11	96,200	Ton	691.00	66,474,000
Olives	2004	15,620	3.66	57,200	Ton	636.00	36,379,000
	2003	15,800	3.64	57,500	Ton	462.00	26,565,000
Oranges - Navel	2004	75,026	12.80	787,000	Ton	526.00	413,962,000
	2003	72,725	12.40	694,000	Ton	465.00	322,710,000
Processed	2004	X	X	173,000	Ton	30.90	5,346,000
	2003	X	X	207,000	Ton	30.40	6,293,000
Oranges - Valencia	2004	23,886	12.20	227,000	Ton	543.00	123,261,000
	2003	27,348	13.50	248,000	Ton	428.00	106,144,000
Processed	2004	X	X	64,000	Ton	60.30	3,859,000
	2003	X	X	122,000	Ton	60.30	7,357,000
Peaches - Cling	2004	1,289	16.00	20,600	Ton	227.00	4,676,000
	2003	1,215	17.00	20,700	Ton	231.00	4,782,000
Peaches - Freestone	2004	12,095	10.20	79,500	Ton	721.00	57,320,000
	2003	14,094	8.28	81,700	Ton	709.00	57,925,000
Processed	2004	X	X	43,700	Ton	242.00	10,575,000
	2003	X	X	35,000	Ton	211.00	7,385,000
Pears & Asian Pears	2004	445	4.78	2,130	Ton	1,700.00	3,621,000
	2003	463	5.42	2,510	Ton	1,300.00	3,263,000
Pecans	2004	830	1.12	930	Ton	2,400.00	2,232,000
	2003	821	0.78	640	Ton	2,700.00	1,728,000
Persimmons	2004	464	6.54	3,030	Ton	940.00	2,848,000
	2003	769	7.30	5,610	Ton	1,380.00	7,742,000
Pistachio Nuts	2004	11,896	1.80	21,400	Ton	3,000.00	64,200,000
	2003	11,875	0.73	8,670	Ton	2,530.00	21,935,000
Plums - Fresh	2004	17,077	6.95	119,000	Ton	834.00	99,246,000
	2003	18,235	6.85	125,000	Ton	684.00	85,500,000
Pomegranates	2004	1,253	5.76	7,220	Ton	934.00	6,743,000
	2003	1,361	4.42	6,020	Ton	974.00	5,863,000

Fruit and Nut Crops continued

Crop	Year	Harvested Acreage	Production		Unit	Per Unit	Value
			Per Acre	Total			Total
Prunes - Dried Plums ^d	2004	5,009	1.57	7,860	Ton	1,360.00	10,690,000
	2003	6,352	1.78	11,300	Ton	543.00	6,136,000
Quince	2004	237	5.93	1,410	Ton	1,320.00	1,861,000
	2003	201	5.77	1,160	Ton	1,280.00	1,485,000
Tangerines ^e	2004	2,653	7.95	21,100	Ton	664.00	14,010,000
	2003	3,471	10.40	36,100	Ton	908.00	32,779,000
Walnuts	2004	28,512	1.89	53,900	Ton	1,310.00	70,609,000
	2003	33,551	1.87	62,700	Ton	1,100.00	68,970,000
Miscellaneous ^f	2004	1,740	X	X	X	X	6,851,000
	2003	1,644	X	X	X	X	6,857,000
TOTAL	2004	300,961					\$1,590,610,000
	2003	325,312					\$1,355,787,000

^a Includes green weight raisins for distillery materials and juice pack.

^b A combined value reflecting free and reserve tonnage.

^c Includes: Pummelos and Hybrids.

^d Yield is dry weight basis.

^e Includes: Tangelos and Tangors.

^f Includes: Avocado, Bushberries, Blueberries, Chestnuts, Figs, Guava/Feijoa, Limes, Plumcots, Pluots, Processed Grapefruit, Processed Tangerines, Strawberries, and Kumquat.



Photographs provided by the California Cherry Advisory Board and the Cherry Marketing Institute and are used with permission.

Nursery Products

Nursery production in Tulare County was stable in 2004. This meant only a modest increase of 4% or \$2,648,000.

Crop	Year	Production		Value	
		Quantity Sold	Unit	Per Unit	Total
Citrus & Subtropical Trees	2004	739,000	Each	9.12	6,740,000
	2003	784,000	Each	8.88	6,962,000
Deciduous Fruit & Nut Trees	2004	603,000	Each	7.98	4,812,000
	2003	518,000	Each	9.04	4,683,000
Grape & Berry Vines	2004	5,630,000	Each	1.40	7,882,000
	2003	3,674,000	Each	1.79	6,576,000
Foliage Plants & Cut Flowers	2004	X	X	X	961,000
	2003	X	X	X	832,000
Ornamental Trees & Shrubs	2004	4,480,000	Each	10.10	45,248,000
	2003	5,396,000	Each	7.94	42,844,000
Miscellaneous*	2004	X	X	X	3,780,000
	2003	X	X	X	4,878,000
TOTAL	2004				\$69,423,000
	2003				\$66,775,000

* Includes: Aquatics, Citrus (Buds, Cuttings & Scions), Christmas Trees, Ground Cover, Irises, Landscape Olive Trees, Palm Trees, Turf, and Vegetable & Flower Plants in Flats.

Apiary Products

Honey prices were down this year as Bee Keepers continue to struggle with competition from imported honey. Apiary value dropped by 19% or \$6,526,000.

Crop	Year	Production		Value	
		Total	Unit	Per Unit	Total
Honey - Orange ^a	2004	16,754,000	Pound	1.14	19,100,000
	2003	14,497,000	Pound	1.56	22,615,000
Other	2004	1,529,000	Pound	0.85	1,300,000
	2003	2,174,000	Pound	1.36	2,957,000
Beeswax	2004	125,000	Pound	1.26	158,000
	2003	113,000	Pound	1.23	139,000
Pollination ^b	2004	151,000	Colony	49.70	7,505,000
	2003	179,000	Colony	49.60	8,878,000
TOTAL	2004				\$28,063,000
	2003				\$34,589,000

^a From bee colonies registered in Tulare County during the 2004 citrus bloom period.

^b Estimated number of colonies required for adequate pollination.

Livestock & Poultry

All populations of livestock increased in 2004 except for Turkeys. Cattle and calves enjoyed high prices during 2004. Cattle increased in overall value by \$63,573,000. Lambs, Hogs and Pigs, and turkeys all enjoyed higher per unit prices. The overall increase for livestock and poultry was \$68,033,000 or 15%.

Crop	Year	No. of Head	Total Liveweight	Unit	Per Unit	Value	
							Total
Cattle & Calves	2004	572,000	X	Head	763.00		436,436,000
	2003	571,000	X	Head	653.00		372,863,000
Lambs	2004	13,900	1,325,000	Pound	0.90		1,192,000
	2003	13,700	1,299,000	Pound	0.88		1,143,000
Hogs & Pigs	2004	239,000	X	Head	113.00		27,007,000
	2003	236,000	X	Head	81.30		19,187,000
Turkeys	2004	673,000	17,506,000	Pound	0.39		6,827,000
	2003	702,000	18,100,000	Pound	0.38		6,878,000
Miscellaneous*	2004	X	X	X	X		37,521,000
	2003	X	X	X	X		40,879,000
TOTAL	2004						\$508,983,000
	2003						\$440,950,000

* Includes: Aquaculture, Beneficial Organisms, Chickens, Escargot, Fish Bait, Game Birds, Goats, Pet Food, Pigeons, Pullets, Rabbits, Sheep, and Turkey Breeders.

Livestock & Poultry Products

Milk is a billion dollar commodity in Tulare County for the third year, grossing \$1,367,136,000. Production continues to increase, along with the price, to maintain milk as our most valuable commodity.

Crop	Year	Production	Unit	Per Unit	Value	
						Total
Manure ^a	2004	2,472,000	Ton	1.09		2,694,000
	2003	2,538,000	Ton	1.21		3,071,000
Milk - Market	2004	92,299,000	Cwt.	14.58		1,345,719,000
	2003	91,940,000	Cwt.	11.58		1,064,665,000
Manufacturing	2004	1,409,000	Cwt.	15.20		21,417,000
	2003	265,000	Cwt.	11.82		3,132,000
Miscellaneous ^b	2004	X	X	X		9,136,000
	2003	X	X	X		11,688,000
TOTAL	2004					\$1,378,966,000
	2003					\$1,082,556,000

^a Includes: Dairy and Poultry Manure.

^b Includes: Turkey Hatching Eggs, Chicken Eggs (Market & Hatching), and Wool.

Seed Crops

Seed crops experienced a 74% increase in the number of harvested acres, but had less than a 119% increase in total value.

Crop	Year	Harvested Acreage	Per Acre	Production		Value	
				Total	Unit	Per Unit	Total
Cotton - Registered or Certified ^a	2004	8,600	X	8,600	Ton	225.00	1,935,000
	2003	4,943	X	3,710	Ton	230.00	853,000
Miscellaneous ^c	2004	210	X	X	X	X	420,000
	2003	109	X	X	X	X	223,000
TOTAL	2004	210					\$2,355,000
	2003	109					\$1,076,000

^a Not included in total acreage for "Seed Crops."

^c Includes: Alfalfa, Blackeye Cowpeas, Corn, Oats, and Sunflowers.

Industrial Crops

The 29% increase in industrial crops was due to the large increase in the harvest of timber. There was a price decrease in timber, due to a higher quantity of salvage timber harvested.

Crop	Year	Production		Value	
		Total	Unit	Per Unit	Total
Timber harvested ^a	2004	16,339,000	Board Ft.	0.133	2,173,000
	2003	9,802,000	Board Ft.	0.190	1,862,000
Miscellaneous ^b	2004				998,000
	2003	X	X	X	600,000
TOTAL	2004				\$3,171,000
	2003				\$2,462,000

^a Previous year's production & value based on information provided by Timber Tax Division, Property Taxes Dept., State Board of Equalization.

^b Includes: Almond Shells, Biomass, Fire Wood, and Walnut Stumps.

"Anthocyanins found in cherries block inflammatory enzymes, reducing pain. In fact, 20 cherries are 10 times as potent as aspirin and have positive effects on gout and arthritis pain."

- California Cherry Advisory Board -

SUMMARY

COMMODITY	YEAR	HARVESTED ACREAGE	VALUE
FIELD CROPS	2004	1,308,930	\$420,701,000
	2003	1,273,384	\$290,115,000
VEGETABLE CROPS	2004	7,916	\$37,252,000
	2003	5,853	\$22,212,000
FRUIT & NUT CROPS	2004	300,961	\$1,590,610,000
	2003	325,312	\$1,355,787,000
NURSERY PRODUCTS	2004	X	\$69,423,000
	2003	X	\$66,775,000
APIARY PRODUCTS	2004	X	\$28,063,000
	2003	X	\$34,589,000
LIVESTOCK & POULTRY	2004	X	\$508,983,000
	2003	X	\$440,950,000
LIVESTOCK & POULTRY PRODUCTS	2004	X	\$1,378,966,000
	2003	X	\$1,082,556,000
SEED CROPS	2004	210	\$2,355,000
	2003	109	\$1,076,000
INDUSTRIAL CROPS	2004	X	\$3,171,000
	2003	X	\$2,462,000
GRAND TOTAL	2004	1,618,017	\$4,039,524,000
	2003	1,604,658	\$3,296,522,000

**“Cherries are low in calories and contain no fat.
They are also high in potassium, vitamin C, B complex and minerals”**

-California Cherry Advisory Board -

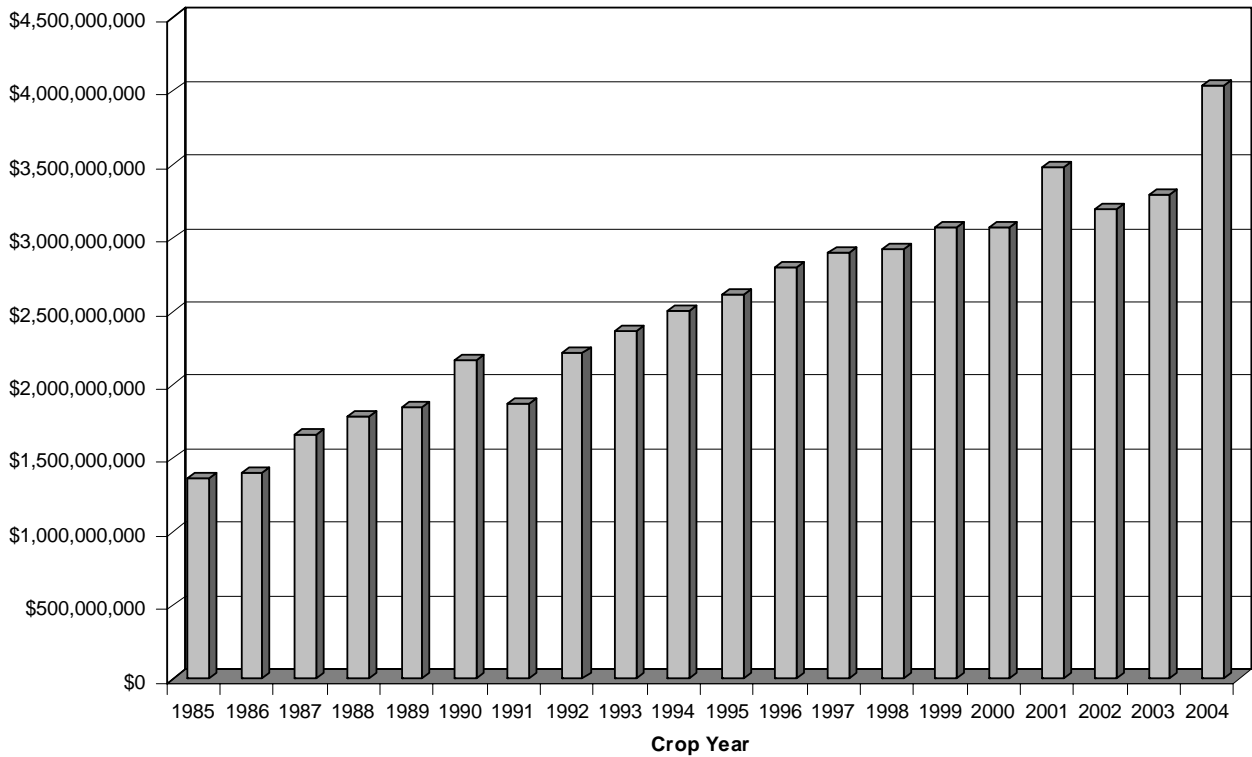
MILLION DOLLAR PRODUCTS

2004 Ranking	2004 Total Value	2003 Ranking
1 Milk	\$1,367,136,000	1
2 Oranges - Navel & Valencia	\$545,428,000	2
3 Cattle & Calves	\$436,436,000	4
4 Grapes	\$393,583,000	3
5 Alfalfa - Hay & Silage	\$132,700,000	6
6 Cotton - Lint & Seed	\$100,115,000	11
7 Plums	\$99,246,000	5
8 Corn - Grain & Silage	\$95,161,000	10
9 Almonds (Meats and Hulls)	\$90,657,000	12
10 Nectarines	\$86,730,000	9
11 Peaches - Cling & Freestone	\$72,571,000	7
12 Walnuts	\$70,609,000	8
13 Pistachio Nuts	\$64,200,000	20
14 Nursery - Ornamental Trees & Shrubs	\$45,248,000	13
15 Olives	\$36,379,000	15
16 Pasture & Range	\$29,376,000	17
17 Silage - Small Grain	\$29,127,000	19
18 Lemons	\$29,073,000	18
19 Hogs & Pigs	\$27,007,000	22
20 Kiwifruit	\$26,754,000	23
21 Honey	\$20,400,000	16
22 Wheat - Grain	\$19,153,000	24
23 Tangerines	\$14,010,000	14
24 Cherries	\$11,580,000	21
25 Prunes	\$10,690,000	31
26 Grapefruit.	\$9,652,000	25
27 Nursery - Grape & Berry Vines	\$7,882,000	30
28 Pollination	\$7,505,000	26
29 Turkeys	\$6,827,000	29
30 Pomegranates.	\$6,743,000	32
31 Nursery - Citrus & Subtropical Trees	\$6,740,000	28
32 Sudan Grass	\$5,814,000	36
33 Tomatoes - Fresh	\$5,592,000	48
34 Nursery - Deciduous Fruit & Nut Trees	\$4,812,000	34
35 Cucumbers	\$3,926,000	33
36 Pears & Asian Pears	\$3,621,000	38
37 Beans - Dry	\$3,380,000	35
38 Broccoli	\$3,316,000	37
39 Persimmons	\$2,848,000	27
40 Manure	\$2,694,000	40
41 Apples	\$2,485,000	39
42 Pecans	\$2,232,000	43
43 Quince	\$1,861,000	45
44 Apricots	\$1,807,000	41
45 Snap Beans - Fresh	\$1,688,000	46
46 Sweet Corn	\$1,536,000	-
47 Lambs	\$1,192,000	47
48 Sugar Beets	\$1,144,000	44

**TWENTY YEAR COMPARISON OF AGRICULTURE
INCOME IN TULARE COUNTY
1985-2004**

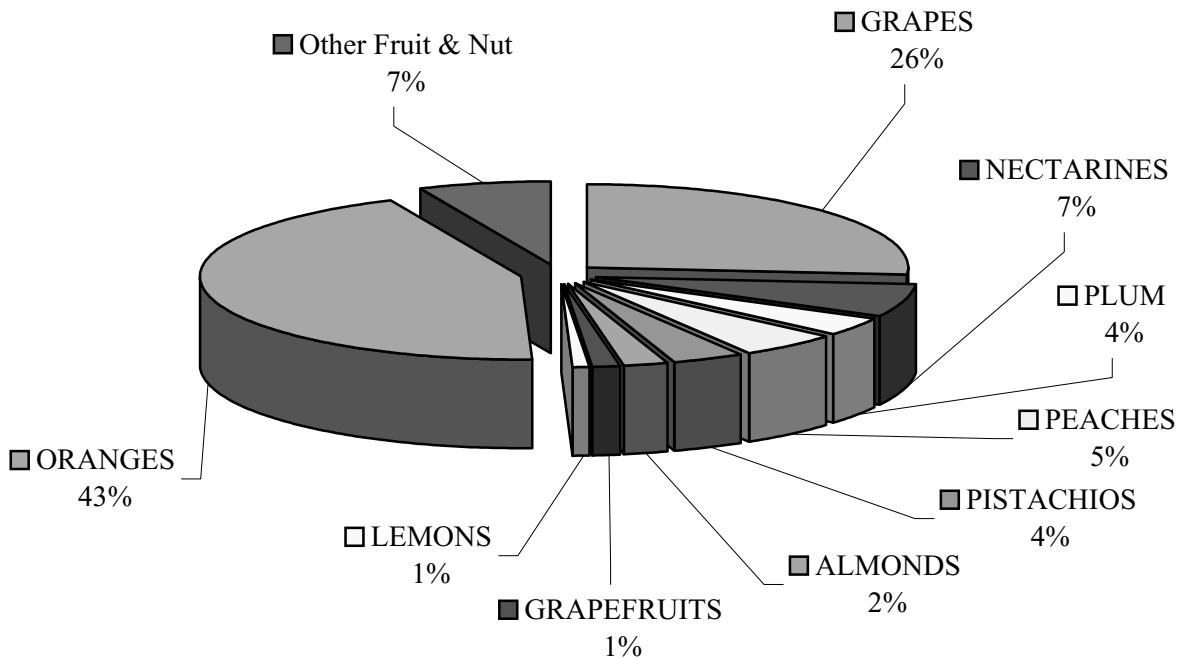
1985	1,368,387,100	1995	2,611,088,000
1986	1,400,743,000	1996	2,805,452,000
1987	1,667,201,900	1997	2,900,892,000
1988	1,791,151,200	1998	2,919,528,800
1989	1,853,101,600	1999	3,078,369,000
1990	2,169,448,000	2000	3,068,648,200
1991	1,878,425,400	2001	3,475,999,600
1992	2,221,612,100	2002	3,201,084,900
1993	2,365,202,000	2003	3,296,522,000
1994	2,504,944,000	2004	4,039,524,000

Tulare County 20 Year Comparison

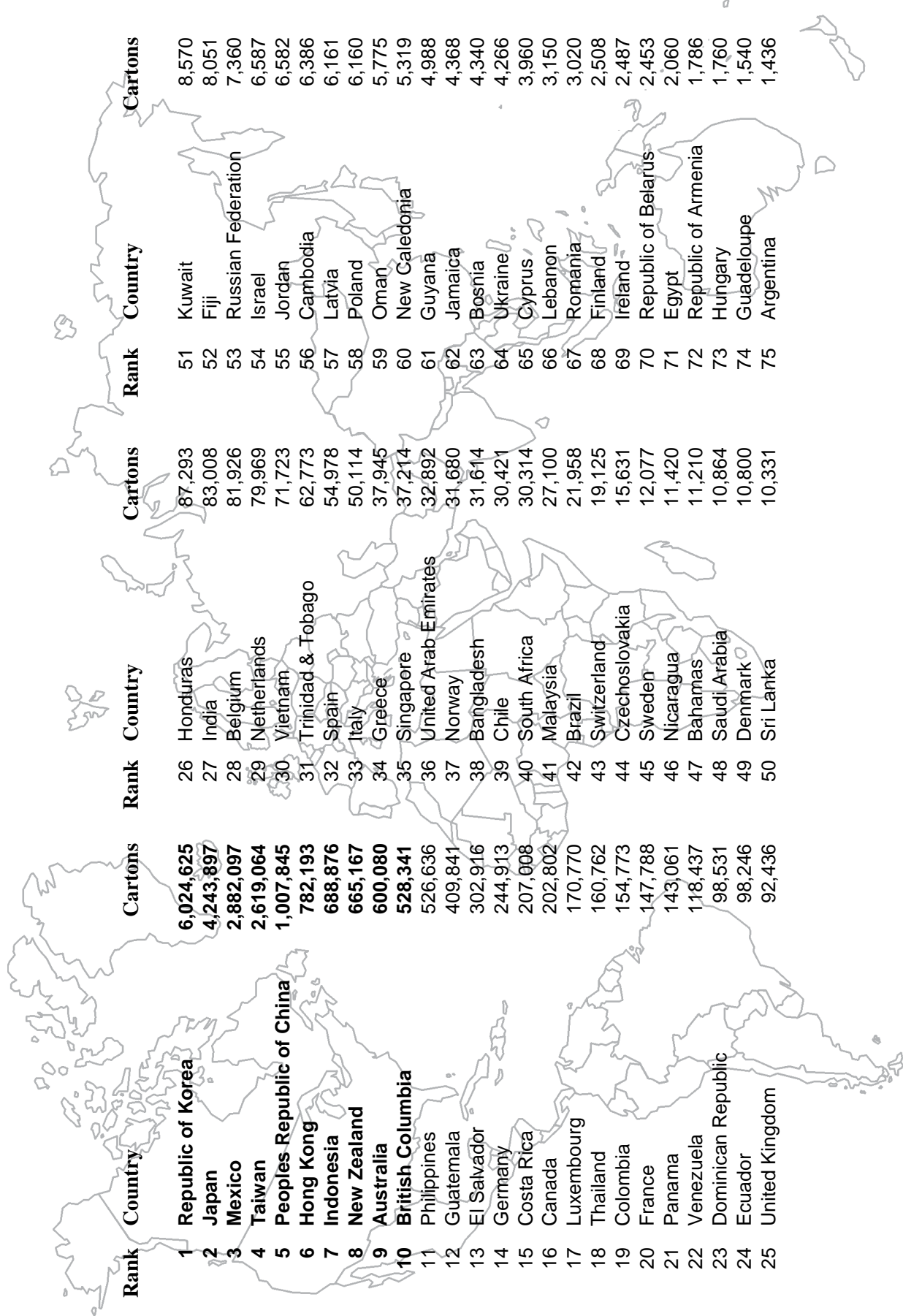


**STANDARD CARTON WEIGHTS (LBS.)
FOR FRESH MARKET COMMODITIES**

Almonds	5	Lemons	40
Apples	40	Nectarines	25
Apricots	24	Oranges	37½
Avocados	25	Peaches - Freestone	25
Beans, Snap	30	Pears, Asian Pears	11
Broccoli	23	Persimmons	11
Cauliflower	25	Pistachios (roasted)	25
Cherries	18	Plums	28
Corn, Sweet	50	Pomegranates	28
Figs	8	Prunes, Fresh	28
Grapefruit	36	Quince	22
Grapes, Juice	36	Squash	25
Grapes, Table	21	Tangerines	25
Honeydew Melons	30	Tomatoes	25
Kiwifruit	7½		



**Fruit & Nut
Export Commodities 2004**



Tulare County Sustainable Agricultural Reporting - 2004

County Biological Control

Pest	Agent/Mechanism	Program Scope
Aphids <i>Aphis</i> spp.	Asian Ladybird Beetle <i>Harmonia axyridis</i>	3 sites
Ash Whitefly <i>Siphoninus phillyreae</i>	Parasitic Wasp <i>Encarsia inaron</i> Ladybird Beetle <i>Cleitostethus arcuatus</i>	Upon demand Upon demand
Comstock Mealybug <i>Pseudococcus comstocki</i>	Parasitic Wasps <i>Pseudoaphycus malinus</i> <i>Allotropa burrelli</i>	Upon demand
Cottony-Cushion Scale <i>Icerya purchasi</i>	Parasitic Fly <i>Cryptochetum iceryae</i> Vedalia Beetle <i>Rodolia cardinalis</i>	Upon demand 1 site
Italian Thistle <i>Carduus pycnocephalus</i>	Seedhead Weevil <i>Rhinocylus conicus</i>	2 sites
Milk Thistle <i>Silybum marianum</i>	Seedhead Weevil <i>Rhinocylus conicus</i>	Upon demand
Mulberry Whitefly <i>Tetraleurodes mori</i>	Ladybird Beetle <i>Delphastus dejavu</i>	Upon demand
Puncture Vine <i>Tribulus terrestris</i>	Seed & Stem Weevils * <i>Microlarinus lareynii</i> <i>Microlarinus lypriformis</i>	Upon demand
Russian Thistle <i>Salsola australis</i>	Casebearer Moth <i>Coleophora klimeschiella</i>	Upon demand
Silverleaf Whitefly <i>Bemesia argentifolia</i>	Parasitic Wasps <i>Eretmocerus</i> spp.	1 site
Yellow Star Thistle <i>Centaurea solstitialis</i>	Flowerhead Bud Weevil <i>Bangasternus orientalis</i> Flower Weevil <i>Larinus curtus</i> Hairy Weevil <i>Eustenopus villosus</i> Peacock Fly <i>Chaetorellia succinea</i> Yellow Star Gall Fly <i>Urophora sirunaseva</i> Yellow Star Thistle Rust <i>Puccinia jaceae solstitialis</i>	Upon demand 2 sites 1 site Upon demand Upon demand 1 site

*Also provided insect agents to other out-of-county agencies.

County Pest Detection

Target Pest	Number of Traps	Host Crops
European Corn Borer	10	Corn/Sorghum
European Pine Shoot Moth	6,624	Pines
Gypsy Moth	200	Shade Trees
Japanese Beetle	135	Turf & Flowers
Khapra Beetle	55	Stored Food Products
Mediterranean Fruit Fly	529	Fruit Trees
Melon Fruit Fly	91	Vegetables
Mexican/Caribbean Fruit Flies	249	Fruit Trees
Oriental Fruit Fly	89	Fruit Trees

County Pest Eradication

Pest	Agent/Mechanism	Program Scope
Alligatorweed <i>Alternanthera philoxeroides</i>	Mechanical Control Chemical Control	105 Plants
Pink Bollworm <i>Pectinophora gossypiella</i>	Mechanical Control Host Free Period	64,180 Acres
Scotch Thistle <i>Onopordum acanthium</i>	Mechanical Chemical Control	General Distribution

Registered Organic and Certified Producer Farming Statistics

Organic Growers	77
Acres of Organic Cropland	2,922
Organic Packers/Shippers	8
Certified Producers Certificates	135

Organic Crops

Grapes	864	Acres
Citrus	935	Acres
Tree Fruits	555	Acres
Nuts	264	Acres
Olives	114	Acres
Vegetables/Melons	61	Acres
Kiwi	44	Acres
Apples/Pears	37	Acres
Other	48	Acres
Dairy Cows	1,080	Head

County Pest Exclusion

Pest Rejections	Setting	Program Scope
A - Burrowing Nematode <i>Radophilus similis</i>	Incoming Shipments	12 rejections/destroyed
Caribbean Fruit Fly <i>Anastrepha suspensa</i>	Incoming Shipment	1 rejection/destroyed
Citrus Canker <i>Xanthomonas campestris pv citri</i>	Incoming Shipments	5 rejections/destroyed
Gypsy Moth <i>Lymantria dispar</i>	Incoming Shipment	1 rejection/destroyed
Japanese Beetle <i>Popilla japonica</i>	Incoming Shipments	5 rejections/destroyed
Markings	Incoming Shipments	84 rejections/destroyed or released
Mediterranean Fruit Fly <i>Ceratitis capitata</i>	Incoming Shipment	1 rejection/destroyed
Walnut Pests	Incoming Shipment	1 rejection/destroyed
Q- Rated Ants	Incoming Shipment	1 rejection/destroyed



Tulare County
Agricultural Commissioner/Sealer
4437 South Laspina Street
Tulare, CA 93274

PRESORTED
FIRST CLASS
U.S. POSTAGE
PAID
VISALIA, CA
PERMIT #142